

2023 ANNUAL MEETING OF THE NORTH IOWA COMMUNITY SCHOOL DISTRICT

A REVIEW OF THE 2022-2023 ACADEMIC / FISCAL YEAR



AGENDA
November 13, 2023
North Iowa High School Media Center

<u>Content</u>	<u>Page</u>
Annual Meeting Intended Outcomes	2
About North Iowa	3
What Has Been Going On?	4
Our Mission Statement and Philosophy	5
Broad Program Goals	6
Essential Learnings and Indicators of Success	7
What Do The Numbers Tell Us?	8 – 12
Considerations For The 2022-2023 School Year	13 – 14
Our short-term and long-term facilities goals	15
Student Achievement Data	16-19

Questions are encouraged throughout the evening meeting.

- A) The North Iowa Community School Board of Education desires to partner with all district patrons and to keep them informed as to the quality educational program their tax dollars are paying for each year.

- B) The North Iowa Community School Board of Education will model the use of data to make research-based short-term and long-term educational, fiscal, and staffing decisions.

- C) The North Iowa Community School Board of Education is using the annual meeting to reflect on where we have been and to map where we are going as a school district.

North Iowa Community School Board Members

Member	District	Board Term	Email Address
Cody Wirtjes	District # 1	2021 – 2025	cody.wirtjes@northiowa.org
Jamie Price	District # 2	2011 – 2023	jamie.price@northiowa.org
Brian Plath	District # 3	2020 – 2023	brian.plath@northiowa.org
Alicia Brass	District # 4	2020 – 2023	alicia.brass@northiowa.org
Matt Duve	District # 5	2008 – 2023	matt.duve@northiowa.org
Jared Viergutz	At Large	2021 – 2025	jared.viergutz@northiowa.org
Rachel Wubben	At Large	2013 – 2025	rachel.wubben@northiowa.org



The North Iowa Community School District is located in beautiful north-central Iowa. Surrounded by some of the richest farm land in the world, we have nurtured one of the richest educational experiences found in Iowa.

The Board of Education has created a research-based and data driven decision making process. All school decisions are framed around “What is best for kids.”

The faculty is the foundation of a strong school system and North Iowa boasts a highly qualified faculty with a vast array of educational experiences. This collaborative staff of life longer learners is both progressive and reflective, as evidenced by the numerous academic changes and implementation of the newest programs and instructional strategies.

The district is fortunate to have a support staff that is truly supportive of the district and the community at large. Our support staff contributes to the personal and warm working environment within our buildings.

Innovative, energetic, open, and caring people make up our administrative team. The thrust of the administrative team is to create a learner-centered environment that assists all learners to reach their desired goals regardless of age or ability level.

North Iowa Community School District offers a comprehensive co-curricular program and stresses student involvement in a wide range of activities in an attempt to help young people to become well-rounded citizens. The emphasis on all co-curricular offerings is participation. The co-curricular offerings are an extension of our classrooms and require we use those offerings to help promote democracy, citizenship, sportsmanship, and collaboration.

Our communities value their church, school, local businesses, friendships, and children. Their support for “doing the right thing for kids” can not be duplicated in many places today. They are well read, ask good questions, support school activities, and want the best for all our children.

What has been going on?

Success Center After School Program ... *Tornado Safe Room (Wellness Center) continues to be utilized by school and community* **Elementary 100th Day of School**..... *Large number of students qualified for State Speech*..... **Teachers involved in Professional Learning Communities (PLC)** ... *Double section student enrollment in all elementary grades* *School Improvement Advisory Committee meetings* *Work on Iowa Core Curriculum implementation* ... **Regular monthly school board meetings and special meetings as needed** ... *Ben Sloter Scholarship (\$3,000) was awarded to qualifying Graduating Seniors* ... *on-going partnership between the school and Little Bison Childcare Center* *continued research and development of a standards-based assessment curriculum* **Modified schedule for 1st semester***Newspaper articles about the school or school events* ... **North Iowa Alternative School** providing successful alternative education opportunities ... *grades pk-6 implementing Center For Collaborative Classroom literacy curriculum* **Laptop computers for all 5th – 12th grade students** **FALL PLAY** *National Day of Code*....**Ongoing Booster Club Support** *“Prime for Life” positive decision making program for all 9th grade students* **Hired outstanding new teachers and staff** ... *Continued membership with MISIC and use of MAP Testing to strengthen assessment and alignment to Iowa Core Curriculum*..... **Tiered Algebra**.....**Second Chance Reading**...**Continued wrestling sharing agreement with Forest City CSD** *Student Council hosted Senior Citizen meal**Track team took multiple student-athletes to State Meet* *Top of Iowa super conference athletics and activities* *FFA farm project – rental of 40 acres* **3M School Supplies Donation** *Ag in the Classroom* **Backpack Buddies** *Successful collective bargaining agreement between school district and NIEA* ...*4th grade SWITCH*....*Invent Iowa* ... **Formative Assessment/Instructional Process Implementation**.....*Qualified students for State Bowling*...*Positive Behavior Interventions and Supports*..... **EDUCATIONAL FIELD TRIPS** ... **IASB School Board Convention** ... **Continuation of Summer Food Program** ... **Teacher Leadership and Compensation had a positive impact on teaching and learning.**

Caring and compassionate teachers educating our children on a daily basis.

**The mission of the
North Iowa Community School District:**

"Linking Students with Success"

OUR EDUCATIONAL PHILOSOPHY

- We strive to provide effective, efficient, and timely communication.
- We believe building and maintaining healthy relationships is paramount to success.
- We believe honest and positive collaboration from all stakeholders reaches a common goal for student success.
- We will provide student focused opportunities to learn safely in a positive and successful environment.



BROAD PROGRAM GOALS

Student Learning	<ol style="list-style-type: none">1. Develop clear consistent measurements to focus on and celebrate growth.2. Make data-based academic decisions about the future.
Innovation	<ol style="list-style-type: none">1. Enhance learning with most up to date innovative tools available (i.e. technology and STEM).2. Provide student experiences with real world technology, the same or similar to what will be used in the workforce now and in the future.
Involvement	<ol style="list-style-type: none">1. Provide a wide array of activities for students to participate in well rounded experiences.2. Create multiple levels of leadership throughout staff.
Image	<ol style="list-style-type: none">1. Project professional positive image in all formats (webpage, social media, communication, and at events)2. Develop facilities that are efficient and instill a sense of pride for all stakeholders.

North Iowa Community Schools Essential Learnings and Indicators of Success

North Iowa students will be successful communicators.

Successful communicators:

- express needs and ideas so others understand,
- interprets experiences,
- evaluates and analyzes information,
- listens and perceives information from others.

North Iowa students will use good problem solving skills.

Successful problem solvers:

- apply skills to real life situations,
- learn from past experiences,
- use a variety of appropriate technology,
- demonstrates appropriate risk taking,
- demonstrates flexibility in their thinking,
- shows conflict management skills.

North Iowa students will be life-long learners.

Life-long learners:

- demonstrate self-sufficiency/self-directed learning,
- demonstrate appropriate use of resources,
- demonstrate adaptability to various situations,
- demonstrate perseverance.

North Iowa students will practice good citizenship.

Good citizens:

- demonstrate responsibility and active participation in the democratic community,
- demonstrate effective use of social skills,
- shows responsibility for themselves, to others, and to the world.

Enrollment trends

As much as any 1 year, it helps us to understand our history of enrollment.

Certified Student Enrollment

	Total Enrollment	Open Enrollment	
		<u>Out</u>	<u>In</u>
1997-1998	642	53	18
1998-1999	649.1	51	10
1999-2000	671.1	65	10
2000-2001	655.3	55	12
2001-2002	653.1	51	14
2002-2003	660.6	50	16
2003-2004	624.0	44	26
2004-2005	622.6	47	34
2005-2006	598.8	39	26
2006-2007	569.7	43	43
2007-2008	572.0	43	27
2008-2009	539.9	46	16
2009-2010	511.8	35	20
2010-2011	496.9	31	21
2011-2012	476.5	29	19
2012-2013	454.8	35	19
2013-2014	462.6	40	26
2014-2015	470.9	48	32
2015-2016	480.9	43	34
2016-2017	476.5	41	42
2017-2018	455.5	41	49
2018-2019	458.0	47	54
2019-2020	445.2	53	57
2020-2021	420.3	63	69
2021-2022	441.7	70	68
2022-2023	464.0	80	61
2023-2024	465.2	71	65

Enrollment Served

Enrollment Served takes into account the net impact of open enrollment, tuition in/out and preschool, but not weightings.

- Over the last 15 years the district's Enrollment Served has fallen 7.9%. This is an average of -0.5% per year.
- Over the last 10 years the district's Enrollment Served has increased 2.8%. This is an average of 0.3% per year.
- Over the last 5 years the district's Enrollment Served has increased 0.8%. This is an average of 0.2% per year.

Free and Reduced Hot Lunch

1995-1996 ...	14.6 %
1996-1997 ...	19.2 %
1997-1998 ...	19.8 %
1998-1999 ...	22.8 %
1999-2000 ...	25.2 %
2000-2001 ...	33.6 %
2001-2002 ...	38.9 %
2002-2003 ...	38.9 %
2003-2004 ...	38.5 %
2004-2005 ...	40.3 %
2005-2006 ...	36.7 %
2007-2008 ...	42.7 %
2008-2009 ...	37.8 %
2009-2010 ...	46.0 %
2010-2011 ...	37.5 %
2011-2012 ...	40.16 %
2012-2013 ...	42.50 %
2013-2014 ...	43.25 %
2014-2015 ...	46.79 %
2016-2017 ...	40.69 %
2017-2018 ...	39.96 %
2018-2019 ...	43.70 %
2019-2020 ...	39.20%
2020-2021 ...	44.20%
2021-2022 ...	43.15%
2022-2023 ...	44.2%

Student involvement in activities

Activity	20-21	21-22	22-23
Fall Play '21	25 kids	35 kids	40 kids
Spring Musical '21	33 kids	31 kids	24 kids
Football Cheer '21	12 kids	12 kids	13 kids
Basketball Cheer '21	8 kids	7 kids	8 kids
Cross Country '21	9 kids	9 kids	11 kids
MS Cross Country '21	6 kids	6 kids	5 kids
Volleyball '21	20 kids	20 kids	18 kids
MS Volleyball '21	17 kids	17 kids	20 kids
Football '21	25 kids	23 kids	22 kids
MS Football '21	23 kids	23 kids	21 kids
MS Boys Basketball '21	31 kids	31 kids	25 kids
MS Girls Basketball '21	13 kids	12 kids	17 kids
MS Wrestling '21	10 kids	12 kids	7 kids
Softball '21	16 kids	13 kids	15 kids
Baseball '21	21 kids	13 kids	16 kids
Girls Track '21	14 kids	13 kids	16 kids
Boys Track '21	14 kids	20 kids	17 kids
MS Girls Track '21	14 kids	16 kids	19 kids
MS Boys Track '21	16 kids	20 kids	20 kids
Golf '21	18 kids	11 kids	5 kids
Girls Basketball '20-'21	11 kids	14 kids	11 kids
Speech '21	9 kids	10 kids	7 kids
Boys Basketball '20-'21	18 kids	16 kids	18 kids
Bowling '20-'21	10 kids	8 kids	9 kids (14 if you include LM and NU)
FFA '20-'21	47 kids	26 kids	23 kids
Quiz Bowl '20-'21	10 kids	8 kids	9 kids
Band '21	12 kids	12 kids	13 kids
Chorus '21	17 kids	18 kids	19 kids
Wrestling		4 kids	7 kids

North Iowa Historical Tax Rate						
FY18	FY19	FY20	FY21	FY22	FY23	FY24
\$10.09	\$11.11	\$10.37	\$10.25	10.28	\$9.77	9.81

District Information

Select Your School District:



Property Tax Summary

General Fund	Tax Rate	Rank	Taxes Levied	Rank
Uniform Levy Rate	\$ 5.4000	1 - T	\$ 2,098,193	142
Additional Levy Rate	\$ 1.5994	305	\$ 621,446	233
SBRC Cash Reserve	\$ -	134 - T	\$ -	134
Regular Cash Reserve	\$ -	58 - T	\$ -	58
Total Cash Reserve	\$ -	144 - T	\$ -	144
Educational Improvement Program	\$ -	3 - T	\$ -	3
ISL Property Rate	\$ 0.6401	157	\$ 292,903	115
Use of Fund Balance to Reduce Levy	\$ -	1 - T	\$ -	1
Total General Fund Levy	\$ 7.6395	300	\$ 2,968,360	175

Non-General Fund	Tax Rate	Rank	Taxes Levied	Rank
Management Levy	\$ 0.7721	242	\$ 299,999	221
Library Levy	\$ -	1 - T	\$ -	1
Voted PPEL Levy	\$ 0.9310	156	\$ 425,980	112
Regular PPEL Levy	\$ 0.3300	1 - T	\$ 151,000	117
Total PPEL Levy	\$ 1.2610	155	\$ 576,980	112
PERL (Playground) Levy	\$ 0.1350	1 - T	\$ 52,455	12
Debt Service Levy	\$ -	176 - T	\$ -	176
Total Non-General Fund Levies	\$ 2.1680	264	\$ 929,433	220

Total Property Tax Rate & Dollars Levied	\$ 9.8075	305	\$ 3,897,794	191
---	------------------	------------	---------------------	------------

Last year the SPED deficit rose to approximately \$435,000. Currently our cash reserves are able to pay these expenses. In the future we may need to levy for this. We'll consider how to offset by using income surtax to maintain consistency.

Unspent Authorized Budget

(Spending Authority)

		Unspent Authoriz						
Category	Source		Actual FY 2018	Actual FY 2019	Actual FY 2020	Actual FY 2021	Actual FY 2022	Actual FY 2023
1	Regular Program District Cost	AidLevy 4.3/5.1	\$ 3,227,335	\$ 3,115,620	\$ 3,196,382	\$ 3,177,392	\$ 3,029,068	\$ 3,322,731
2	Regular Program Budget Adjustment	AidLevy 4.8/5.2	+ \$ 26,915	\$ 143,988	\$ -	\$ 50,954	\$ 180,098	\$ -
3	Supplementary Weighting District Cost	AidLevy 4.11/5.3	+ \$ 185,519	\$ 179,317	\$ 186,995	\$ 190,065	\$ 185,529	\$ 197,357
4	Special Ed District Cost	AidLevy 4.14/5.4	+ \$ 433,201	\$ 362,246	\$ 337,853	\$ 344,646	\$ 347,400	\$ 372,329
5	Teacher Salary Supplement District Cost	AidLevy 4.22/5.5	+ \$ 291,475	\$ 291,475	\$ 288,261	\$ 288,261	\$ 286,268	\$ 298,695
6	Prof Dev Supplement District Cost	AidLevy 4.30/5.6	+ \$ 31,749	\$ 31,749	\$ 31,433	\$ 31,433	\$ 31,240	\$ 32,655
7	Early Intervention Suppl District Cost	AidLevy 4.38/5.7	+ \$ 30,029	\$ 30,029	\$ 29,862	\$ 29,862	\$ 29,775	\$ 31,323
8	Teacher Leadership Suppl District Cost	AidLevy 4.46/5.8	+ \$ 154,038	\$ 154,038	\$ 152,619	\$ 152,619	\$ 151,764	\$ 158,792
9	AEA Special Ed Support	AidLevy 4.49/5.9	+ \$ 160,122	\$ 152,131	\$ 154,602	\$ 154,082	\$ 147,722	\$ 161,651
10	AEA Special Ed Support Adjustment	AidLevy 4.54/5.10	+ \$ -	\$ 7,991	\$ 5,520	\$ 6,040	\$ 12,400	\$ -
11	AEA Media Services	AidLevy 4.60/5.11	+ \$ 26,209	\$ 25,309	\$ 25,943	\$ 25,783	\$ 24,741	\$ 27,054
12	AEA Educational Services	AidLevy 4.63/5.11	+ \$ 29,263	\$ 28,252	\$ 28,949	\$ 28,767	\$ 27,596	\$ 30,172
13	AEA Sharing District Cost	AidLevy 4.66/5.11	+ \$ -	\$ -	\$ -	\$ -	\$ 198	\$ 210
14	AEA Teacher Salary Suppl District Cost	AidLevy 4.74/5.14	+ \$ 20,262	\$ 20,262	\$ 19,456	\$ 19,456	\$ 19,310	\$ 20,087
15	AEA Prof Dev Suppl District Cost	AidLevy 4.82/5.15	+ \$ 2,329	\$ 2,329	\$ 2,238	\$ 2,238	\$ 2,221	\$ 2,310
16	SBRC Modified Suppl Amt Dropout Pre	AidLevy 5.17	+ \$ 127,702	\$ 123,404	\$ 125,309	\$ 124,282	\$ 118,360	\$ 129,696
17	SBRC Modified Suppl Amt Other #1	MSA	+ \$ -	\$ -	\$ -	\$ -	\$ -	\$ -
18	SBRC Modified Suppl Amt Other #2	MSA	+ \$ 51,438	\$ 102,915	\$ 66,577	\$ 108,792	\$ 219,472	\$ 308,613
19	Special Ed Deficit Modified Suppl Amt	SpecialEd (DE)	+ \$ 132,513	\$ 214,760	\$ 260,188	\$ 184,783	\$ 164,295	\$ 435,000
20	Special Ed Positive Balance Reduction	SpecialEd (DE)	- \$ -	\$ -	\$ -	\$ -	\$ -	\$ -
21	AEA Special Ed Positive Balance	Manual	- \$ -	\$ -	\$ -	\$ -	\$ -	\$ -
22	Allowance for Construction Projects	Manual	+ \$ -	\$ -	\$ -	\$ -	\$ -	\$ -
23	Unspent Allowance for Construction	Manual	- \$ -	\$ -	\$ -	\$ -	\$ -	\$ -
24	Enrollment Audit Adjustment	AidLevy 5.18	+ \$ -	\$ -	\$ -	\$ (20,937)	\$ -	\$ -
25	AEA Prorata Reduction	AidLevy 5.16	- \$ 29,571	\$ 29,571	\$ 29,571	\$ 29,571	\$ 29,571	\$ 31,881
26	Maximum District Cost	Calculated	= \$ 4,900,528	\$ 4,956,244	\$ 4,882,616	\$ 4,868,947	\$ 4,947,886	\$ 5,496,794
27	Preschool Foundation Aid	AidLevy 7.35	+ \$ 93,296	\$ 117,880	\$ 123,840	\$ 91,624	\$ 108,405	\$ 111,195
28	Instructional Support Authority	AidLevy 10.27	+ \$ 284,649	\$ 286,422	\$ 280,131	\$ 283,772	\$ 284,557	\$ 290,739
29	Ed Improvement Authority	AidLevy 11.3	+ \$ -	\$ -	\$ -	\$ -	\$ -	\$ -
30	Other Miscellaneous Income	Calculated	+ \$ 1,001,188	\$ 926,369	\$ 974,821	\$ 1,197,905	\$ 1,855,943	\$ 1,339,020
31	Unspent Auth Budget - Previous Year	Calculated	+ \$ 1,396,101	\$ 1,868,350	\$ 2,361,926	\$ 2,647,561	\$ 3,021,085	\$ 3,350,733
32	Maximum Authorized Budget	Calculated	= \$ 7,675,762	\$ 8,155,265	\$ 8,623,334	\$ 9,089,809	\$ 10,217,876	\$ 10,588,481
33	Expenditures	"Expenses" tab	- \$ 5,807,412	\$ 5,793,339	\$ 5,975,773	\$ 6,068,724	\$ 6,867,143	\$ 6,873,649
34	Unspent Authorized Budget	Calculated	= \$ 1,868,350	\$ 2,361,926	\$ 2,647,561	\$ 3,021,085	\$ 3,350,733	\$ 3,714,833

- Main focus would remain on line 34, the unspent authority budget. Major factors have included:
 - o ESSER funds were influx of about \$500,000 (one time money)
 - o Changes in enrollment
 - o Changes in expenditures
 - o Low State Supplemental Aid will require that we remain fiscally conservative moving forward
 - o \$2,500,000-3,500,000 would be good target ranges to keep in mind for long term goals

Considerations for the 2023-2024 School Year [and beyond]

Not listed in any priority order.

STUDENT ACHIEVEMENT RELATED GOALS

1. Develop grade and curriculum level standards based proficiency levels to report out regularly, with measurable results.
2. Utilize Formative Assessment Instructional Process to develop systematic K-12 curriculum and instruction with frequent formative assessments.
3. Continue to maintain communications with neighboring districts about ways to share programs and/or staff to maximize program offerings for students.
4. Be active in using technology to enrich student learning opportunities and increase the number of distance learning options for students.

Current and future examples:

- Promethean/Activepanel Interactive Whiteboards
- Student Laptops
- Elementary iPads
- E2020 Courses
- MAP Testing
- FAST assessments
- ISASP
- Electronic report cards
- Electronic lesson plans
- Electronic grade book
- Electronic two-way communication with parents/students
- Flexible Learning Days
- Additional online learning opportunities
- Implementation of Formative Assessment/Instructional Process
- John V. Hanson Career Center
- Opportunities for upperclassmen/women
- Utilizing disciplinary matrixes to be consistent with behaviors

Considerations for the 2023-2024 School Year [and beyond]

Not listed in any priority order.

MANAGEMENT RELATED GOALS

1. Development of strategies to retain staff. Utilize financial resources to reduce staff leaving the district.
2. Financial reports made clearer to school board members and interested patrons. The school board will work with the Superintendent and Board Secretary to design reports which they feel are more beneficial for their intended purpose.
3. Ensure faculty, staff, and administrative team ratio to students is reflective of the current student enrollment, financial condition of the district, and academic needs of the student body.
4. Upgrade facilities, as finances allow, providing a high quality learning environment to all students.
5. Use of rotation to update the fleet to have vehicles in operation for long term planning of the district.
6. Provide a technology rich learning environment.

Potential Future Projects:

1. Building repairs and renovations

- **Playground** upkeep & upgrades for compliance and student safety.
- **Athletic Complex** – Bleacher & fence repair.
- **Concession Stand** renovations or replacement.
- **Wellness Center equipment** – equipment should be replaced and/or upgraded on a rotating basis.
- **Auditorium** lighting and sound upgrades – light rack, fixtures, and bulbs need updated and/or replaced (LED lighting preferred).
- **Gymnasium** improvements – air conditioning and sound system
- **Flooring** repair and/or replacement
- **Roof repair/replacement** – 5 section rotation (replace 1 section every 5 – 7 years).
- **Parking Lot**

2. Buses and other school vehicles

- **Propane school bus** – more cost effective than diesel.
- **Suburban** for transporting students.
- **Truck & plow** for snow removal, transporting equipment, and general maintenance needs.

Current fleet – 10 buses & 9 other vehicles

- 6 buses over 100,000 miles

**1 at 190,000 miles, 1 over 200,000 miles*

- 3 small vehicles over 200,000, 3 over 100,000, 3 with less than 50,000 miles

3. Technology and equipment exceeding \$500

- **Security** equipment and upgrades.
- **Computers** - 4 year rotation for student computers
- **Active panel Interactive White Boards**

Student Achievement Data

We measure student progress with multiple assessments in an effort to get a complete picture of how our students are progressing. In addition to formative and summative assessments used by teachers, the following standardized tests are also used as tools for progress monitoring: Iowa Statewide Assessment of Student Progress (ISASP), and FAST (Iowa Tier).

North Iowa Equity Data

	Students	White	SpEd	ELL	LowSES
Elementary	222	88.3%	11.7%	4.1%	47.7%
Middle School	107	85%	15.9%	4.7%	38.3%
High School	117	83.8%	15.4%	5.1%	42.7%
District	446	86.3%	13.7%	4.5%	44.2%
State	481,713	72.4%	13.4%	6.9%	42.3%

S

ISASP

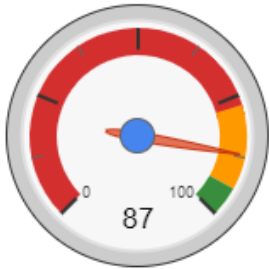
English Language Arts Data Charted by Grade						English Language Arts Scores by Grade (Current Year)		
Grade	2018-19	2019-20	2020-21	2021-22	2022-23			
3rd	71.9	No data	67.9	66.7	82.5	3rd Grade	4th Grade	5th Grade
4th	77.5	No data	78.9	83.3	80	82.5	80.0	79.4
5th	66.7	No data	65.4	83.3	79.4	State avg: 65.1	State avg: 73.6	State avg: 67.3
6th	77.4	No data	59.0	42.3	71.8	6th Grade	7th Grade	8th Grade
7th	50.0	No data	46.2	64.9	70.4	71.8	70.4	67.6
8th	44.4	No data	62.1	73.3	67.6	State avg: 68.5	State avg: 72.7	State avg: 75.2
9th	No data	No data	54.5	54.2	70.4	9th Grade	10th Grade	11th Grade
10th	80.0	No data	52.0	69.4	66.7	70.4	66.7	63.9
11th	67.5	No data	51.9	52.0	63.9	State avg: 71.9	State avg: 72.8	State avg: 69.9

Math Scores by Grade (Current Year)			Math Data Charted by Grade					
Grade	Score	State avg	Grade	2018-19	2019-20	2020-21	2021-22	2022-23
3rd Grade	92.5	State avg: 72.0	3rd	71.9	No data	71.4	69.7	92.5
4th Grade	77.1	State avg: 69.4	4th	67.5	No data	78.9	76.7	77.1
5th Grade	73.5	State avg: 64.4	5th	50.0	No data	34.6	69.4	73.5
6th Grade	74.4	State avg: 67.1	6th	67.7	No data	64.1	42.3	74.4
7th Grade	48.1	State avg: 64.9	7th	50.0	No data	65.4	67.6	48.1
8th Grade	78.4	State avg: 66.5	8th	25.9	No data	62.1	56.7	78.4
9th Grade	59.3	State avg: 59.0	9th	No data	No data	36.4	45.8	59.3
10th Grade	45.8	State avg: 61.9	10th	65.0	No data	44.0	44.4	45.8
11th Grade	63.9	State avg: 60.2	11th	55.0	No data	40.7	32.0	63.9

Note:
 - Data was not collected for the 2019-20 school year.
 - To compare simple cohort (essentially the same students across time) please read the table in a diagonal fashion across the years. To compare cross sectional cohort (same grade over time) please read across each row.

FAST

Healthy Indicator #1



State HI #1

96

AEA HI #1

96

Percent of learners screened with a valid and reliable universal screening tool.

Healthy Indicator #2



State HI #2

64

AEA HI #2

60

Percent of learners not at benchmark assessed with a valid and reliable progress monitoring tool at least 80% of the weeks between screening periods.

Healthy Indicator #3



State HI #3

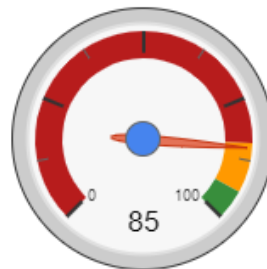
65

AEA HI #3

64

Percent of learners at benchmark in a screening period.

Healthy Indicator #4



State HI #4

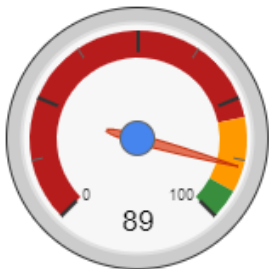
89

AEA HI #4

89

Percent of learners at or above benchmark in the fall remaining at or above benchmark in a subsequent screening period

Healthy Indicator #5



State HI #5

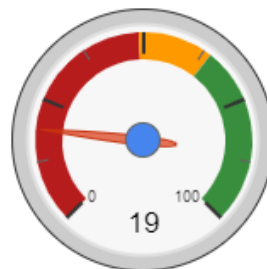
63

AEA HI #5

53

Percent of learners receiving intervention below benchmark two consecutive screening periods.

Healthy Indicator #6



State HI #6

24

AEA HI #6

23

Percent of learners below benchmark in the fall who then score at or above benchmark in a subsequent screening period