

2005 – 2006
North Iowa Community Schools
Annual Community Report

Reading

Long Range Goal:

All K-12 students will achieve at high levels in reading comprehension, prepared for success beyond high school.

Annual Goal: 05-06

To increase the percent of students in grades 3-8 and 10 scoring at or above grade level on the vocabulary sub-test of the Gates MacGinitie Reading Assessment.

Goal met: No

Our goal was to increase the percent of students in grades 3-8 and 10 scoring at or above grade level on the vocabulary sub-test of the Gates MacGinitie Reading Assessment. We did not meet our goal. Last year (2004-2005) our students scored 72.0 % at or above grade level on the vocabulary sub-test of the Gates MacGinitie Reading Assessment. Our annual goal predicted we would see an increase in this percentage. This year (2005-2006) our students scored 62.5% at or above grade level on the same above assessment, this is less than we expected.

The district's long term trend data on the vocabulary sub-test of the Gates MacGinitie Reading Assessment is positive. Over the past four years our students have scored the following percents at or above grade level: 55.1, 58.6, 72.0 and 62.5. In order to assess our long range goal we keep data for the Gates MacGinitie Reading Comprehension sub-test. The long term trend data on the reading comprehension sub-test of the Gates MacGinitie Reading Assessment is also positive. Over the past four years our students have scored the following percents at or above grade level: 59.9, 61.7, 66.2 and 67.3.

Reading continued

The district School Improvement Team, District Advisory Team, Reading Curriculum Team and Board of Directors also consider yearly and long term trend data, disaggregated, from Six Traits of Reading Assessment, DIBLES Assessment, ITBS and ITED.

The North Iowa Community School will implement the following plan to meet future goals:

1. All faculty will receive staff development training in reading and vocabulary strategies. The in-service will be delivered by the District Literacy Team with assistance from AEA 267 consultants and neighboring district teams.
2. All faculty will be required to implement and document the use of at least eight strategies.
Building level teams will continue their work with “Bringing Words to Life” to deepen our knowledge of effective vocabulary instruction.
3. All faculty will receive staff development training with Follow the Leader, test taking strategies.
4. All faculty will have access and training to Homeroom dot com.
5. Third and fourth grade teachers will use the Gates MacGinitie Reading Assessment both fall and spring.
6. Building level principals will assign teachers to reading conferences if and when the specific conferences support our district goals.
7. Time will be available for transition grade teachers (four and five) (eight and nine) to collaborate on curriculum issues.

Annual Goal: 06-07

To increase the percent of students in grades 3-8 and 10 scoring at or above grade level on the vocabulary sub-test of the Gates MacGinitie Reading Assessment.

Math

Long Range Goal:

All K-12 students will achieve at high levels in mathematics, prepared for success beyond high school.

Annual Goal 05-06

The percent of students scoring proficient (70%) on the District Computation Test (grades 2-8) and the District Algebra Test (grade 10) will increase using two-year averaging.

Goal met: No

Our goal was the percent of students scoring proficient (70%) on the District Computation Test (grades 2-8) and the District Algebra Test (grade 10) will increase using two-year averaging. We did not meet the goal. Last year (2004-2005 two year average) our students scored 77.9 % proficient on the district Math Computation Assessment. Our goal predicted we would see an increase in the percent proficient. This year (2005-2006 two year average) our student scored 76.9% proficient, this is less than we expected.

The district's long term trend data on this assessment is positive. The trend for the past five two year cycles is: 66.4, 73.8, 77.1, 77.9 and 76.9.

Math continued

The district School Improvement Team, District Advisory Team, Math Curriculum Team and Board of Directors also consider yearly and long term trend data, disaggregated, from Math Exemplars, ITBS and ITED.

The North Iowa Community School will implement the following plan to meet future goals:

1. All elementary math teachers will receive staff development training in “How to Read Math”. AEA 267 consultants will assist the District Math Committee in delivering the in-service.
2. Teachers in grades one-four and possibly five will implement “Rocket Math”
3. Elementary teachers will implement “Every Student Counts” across the curriculum.
4. Math Curriculum Committee will review and revise where necessary all math district wide assessments.
5. Building principals will assign math teachers to the ICTM Conference if and when it meets our curriculum goals.
6. The district will investigate NCTM membership.
7. Elementary teacher will provide and coach selected students with “Flash Cards”.

Annual Goal: 06-07

The percent of students scoring proficient (70%) on the District Computation Test (grades 2-8) and the District Algebra Test (grade 10) will increase using two-year averaging.

Science

Long Range Goal:

All K-12 students will achieve at high levels in science, prepared for success beyond high school.

Annual Goal: 05-06

The percent of students in grades 6, 8 and 11 that score at the intermediate level or higher (ITBS, ITED) will increase or the percent of students scoring proficient (3 or higher) will increase from fall to spring on the District Science Test (grades 5-8 and 10).

Goal met: Yes

Our goal was the percent of students in grades 6, 8 and 11 that score at the intermediate level or higher (ITBS, ITED) will increase or the percent of students scoring proficient (3 or higher) will increase from fall to spring on the District Science Test (grades 5-8 and 10). We met this goal using the results from our District Science Exemplar Assessment in grades six, eight and ten. Last fall our students averaged 3.3 in grade six, 3.2 in grade eight and 2.9 in grade ten. On the spring assessment our students averaged 4.1 in grade six, 3.1 in grade eight and 4.4 in grade ten.

The district long term trend data using ITBS and ITED is not positive. Students scoring at the intermediate level and higher in grades six, eight and eleven for the past five years is 70.3, 71.1, 80.5, 74.5 and 68.3.

Science continued

The district School Improvement Team, District Advisory Team, Science Curriculum Team and Board of Directors consider yearly and long term trend data, disaggregated, from Science Exemplars, ITBS and ITED.

The North Iowa Community School will implement the following plan to meet future goals:

1. The Science Curriculum Committee will discuss and implement student use of technology across grade levels.
2. Science teachers will implement reading strategies across grade levels.
3. Science teachers will integrate scientific inquiry strategies across grade levels.
4. Mentoring and induction activities will be provided for first year (to the district) science teachers.

Annual Goal: 06-07

The percent of students in grades 6, 8 and 11 that score at the intermediate level or higher (ITBS, ITED) will increase or the percent of students scoring proficient (3 or higher) will increase from fall to spring on the District Science Test (grades 5-8 and 10).

Culture Climate

Long Range Goal:

North Iowa students will treat each other respectfully.

Annual Goal: 05-06

At least 65 percent of students will respond 3 or higher on the average of Section A of the Building Tomorrow Survey.

Goal met: Yes

Our students responded positively precisely 65% of the time on Section A of the Building Tomorrow Survey. The districts long term trend data is not positive. Results from the past five years, students in grades five, eight and eleven, responding positively to the questions in section A are 71.3, 67.1, 70.4, 69.3 and 65.0.

Culture Climate continued

The district School Improvement Team, District Advisory Team, Culture Climate Curriculum Team and Board of Directors consider yearly and long term trend data, disaggregated, from Building Tomorrow Survey and the Iowa Youth Survey.

The North Iowa Community School will implement the following plan to meet future goals:

1. Students in grades seven and nine will be randomly interviewed concerning their views on culture climate in their schools.
2. Tanners Manners will continue to be implemented in the elementary school.
3. The annual Parenting Fair will be held at the middle school.
4. All middle school students will participate in advisor/advisee activities weekly. Character.
5. The high school will develop Character Awards. Student Council.
6. The Culture Climate Committee and administration will recommend assemblies with appropriate subject matter on an available basis.

Annual Goal: 06-07

At least 70 percent of students will respond 3 or higher on the average of Section A of the Building Tomorrow Survey. 60% or better on Q-6.

Multiple Measures

Reading

The district uses Creating Readers Assessments as the multiple measure for reading comprehension. We assess students in grades K-8 and 10-11 both spring and fall. Creating Readers Assessments are aligned with our standards and benchmarks. The data is used to inform instruction.

Fall and spring results for our 2005-06 4th grade are as follows:

Students are assessed on each of the six traits on a scale of 1 to 5. Scores < 2 are low, scores > than 2 and < 4 are intermediate and scores > 4 are high. Proficient scores are intermediate and high combined.

Grade 4 Percent of all students:

	Low	Intermediate	High	Proficient
Fall	9.3	86.0	4.7	90.7
Spring	2.3	81.8	15.9	97.7

Class Mean scores: Fall = 2.9 Spring = 3.3

Multiple Measures

Math

The district uses Math Exemplars Assessments as the multiple measure for mathematics. We assess students in grades K-8 and 10 both spring and fall. Math Exemplars Assessments are aligned with our standards and benchmarks. The data is used to inform instruction.

Fall and spring results for our 2005-06 8th grade are as follows:

Students are assessed on each of the six traits on a scale of 1 to 4. Scores < 2 are low, scores > than 2 and < 3 are intermediate and scores > 3 are high. Proficient scores are intermediate and high combined.

Grade 8 Percent of all students:

	Low	Intermediate	High	Proficient
Fall	40.9	22.7	36.4	59.1
Spring	9.1	22.7	68.2	90.9

Class Mean scores: Fall = 2.4 Spring = 3.1

Multiple Measures

Science

The district uses Science Exemplars Assessments as the multiple measure for science. We assess students in grades 5-8 and 10 both spring and fall. Science Exemplars Assessments are aligned with our standards and benchmarks. The data is used to inform instruction.

Fall and spring results for our 2005-06 10th grade are as follows:

Students are assessed on each of the six traits on a scale of 1 to 5. Scores < 2 are low, scores > than 2 and < 4 are intermediate and scores > 4 are high. Proficient scores are intermediate and high combined.

Grade 8 Percent of all students:

	Low	Intermediate	High	Proficient
Fall	22.0	55.9	22.0	78.0
Spring	0.0	28.8	71.2	100.0

Class Mean scores: Fall = 2.9 Spring = 4.4

Measures of post secondary success

Percent of 2006 graduates taking the ACT and scoring 20 or higher

Graduates	50
ACT	37
% 20+	67.6%

Percent of 2005/2006 seniors planning post secondary training

Seniors	52
PST - %	88.5%

Percent of 2006 graduates completing the core program

4 years language and 3 years of science, math and social studies

Graduates	50
% CCP	54%

Drop out rate 2004-2005

2.4%

Fall 2005 ITBS and ITED

Reported by grade, gender and economic status.

Percent of students proficient compared to state and nation.

Student scores are reported as a percent of the total (N). Low equals the percent of students scoring less than 41%, intermediate equals the percent of students scoring 41% to 89% and high equals the percent of students scoring 90% and above. Proficient equals the intermediate scores and high scores combined.

Grade 3 Reading Comprehension

N		Non Proficient	Proficient	Low	Intermediate	High	la. Prof.	USA Prof.
35	All Students	28.6	71.4	28.6	51.4	20.0	na	60.0
18	Boys	33.3	66.8	33.3	44.5	22.3	na	na
17	Girls	23.5	76.4	23.5	58.8	17.6	na	na
14	LSES	42.8	57.2	42.8	57.2	0.0	na	na
21	Non LSES	19.0	81.0	19.0	47.6	33.4	na	na

Student scores are reported as a percent of the total (N). Low equals the percent of students scoring less than 41%, intermediate equals the percent of students scoring 41% to 89% and high equals the percent of students scoring 90% and above. Proficient equals the intermediate scores and high scores combined.

Grade 3 Math

N		Non Proficient	Proficient	Low	Intermediate	High	la. Prof.	USA Prof.
35	All Students	42.9	57.2	42.9	42.9	14.3	na	60.0
18	Boys	44.5	55.7	44.5	33.4	22.3	na	na
17	Girls	41.2	58.8	41.2	52.9	5.9	na	na
14	LSES	64.3	35.6	64.3	28.5	7.1	na	na
21	Non LSES	28.6	71.5	28.6	52.4	19.1	na	na

Student scores are reported as a percent of the total (N). Low equals the percent of students scoring less than 41%, intermediate equals the percent of students scoring 41% to 89% and high equals the percent of students scoring 90% and above. Proficient equals the intermediate scores and high scores combined.

Grade 3 Science

N		Non Proficient	Proficient	Low	Intermediate	High	la. Prof.	USA Prof.
35	All Students	37.1	62.9	37.1	54.3	8.6	na	60.0
18	Boys	33.3	66.7	33.3	50.0	16.7	na	na
17	Girls	41.1	58.8	41.1	58.8	0.0	na	na
14	LSES	42.9	57.1	42.9	57.1	0.0	na	na
21	Non LSES	33.3	66.6	33.3	52.3	14.3	na	na

Student scores are reported as a percent of the total (N). Low equals the percent of students scoring less than 41%, intermediate equals the percent of students scoring 41% to 89% and high equals the percent of students scoring 90% and above. Proficient equals the intermediate scores and high scores combined.

Grade 4 Reading Comprehension

N		Non Proficient	Proficient	Low	Intermediate	High	Ia. Prof.	USA Prof.
44	All Students	18.2	81.8	18.2	65.9	15.9	78.0	60.0
22	Boys	18.2	81.8	18.2	68.2	13.6	75.6	na
22	Girls	18.1	81.7	18.1	63.6	18.1	80.4	na
18	LSES	22.3	77.8	22.3	66.7	11.1	63.6	na
26	Non LSES	15.4	84.6	15.4	65.4	19.2	84.4	na

Student scores are reported as a percent of the total (N). Low equals the percent of students scoring less than 41%, intermediate equals the percent of students scoring 41% to 89% and high equals the percent of students scoring 90% and above. Proficient equals the intermediate scores and high scores combined.

**Grade 4
Math**

N		Non Proficient	Proficient	Low	Intermediate	High	Ia. Prof.	USA Prof.
44	All Students	27.3	72.7	27.3	59.1	13.6	78.8	60.0
22	Boys	22.7	77.3	22.7	63.7	13.6	79.6	na
22	Girls	31.8	68.1	31.8	54.5	13.6	78.0	na
18	LSES	33.3	33.7	33.3	61.1	5.6	65.2	na
26	Non LSES	23.1	76.9	23.1	57.7	19.2	85.1	na

Student scores are reported as a percent of the total (N). Low equals the percent of students scoring less than 41%, intermediate equals the percent of students scoring 41% to 89% and high equals the percent of students scoring 90% and above. Proficient equals the intermediate scores and high scores combined.

Grade 4 Science

N		Non Proficient	Proficient	Low	Intermediate	High	la. Prof.	USA Prof.
44	All Students	25.0	75.1	25.0	52.3	22.8	na	60.0
22	Boys	18.2	81.8	18.2	54.5	27.3	na	na
22	Girls	31.8	68.1	31.8	50.0	18.1	na	na
18	LSES	38.9	61.2	38.9	50.0	11.2	na	na
26	Non LSES	15.4	84.6	15.4	53.8	30.8	na	na

Student scores are reported as a percent of the total (N). Low equals the percent of students scoring less than 41%, intermediate equals the percent of students scoring 41% to 89% and high equals the percent of students scoring 90% and above. Proficient equals the intermediate scores and high scores combined.

Grade 5 Reading Comprehension

N		Non Proficient	Proficient	Low	Intermediate	High	la. Prof.	USA Prof.
41	All Students	22.0	78.0	22.0	63.4	14.6	na	60.0
24	Boys	20.8	79.2	20.8	66.7	12.5	na	na
17	Girls	23.5	76.4	23.5	58.8	17.6	na	na
13	LSES	30.8	69.2	30.8	61.5	7.7	na	na
28	Non LSES	17.9	82.2	17.9	64.3	17.9	na	na

Student scores are reported as a percent of the total (N). Low equals the percent of students scoring less than 41%, intermediate equals the percent of students scoring 41% to 89% and high equals the percent of students scoring 90% and above. Proficient equals the intermediate scores and high scores combined.

**Grade 5
Math**

N		Non Proficient	Proficient	Low	Intermediate	High	la. Prof.	USA Prof.
41	All Students	7.3	92.7	7.3	75.6	17.1	na	60.0
24	Boys	4.2	95.8	4.2	75.0	20.8	na	na
17	Girls	11.8	88.3	11.8	76.5	11.8	na	na
	White							
13	LSES	15.4	84.7	15.4	84.7	0.0	na	na
28	Non LSES	3.6	96.5	3.6	71.5	25.0	na	na

Student scores are reported as a percent of the total (N). Low equals the percent of students scoring less than 41%, intermediate equals the percent of students scoring 41% to 89% and high equals the percent of students scoring 90% and above. Proficient equals the intermediate scores and high scores combined.

Grade 5 Science

N		Non Proficient	Proficient	Low	Intermediate	High	la. Prof.	USA Prof.
41	All Students	4.9	95.1	4.9	70.7	24.4	na	60.0
24	Boys	8.3	91.6	8.3	66.6	25.0	na	na
17	Girls	0.0	100.0	0.0	76.5	23.5	na	na
13	LSES	15.4	84.6	15.4	84.6	0.0	na	na
28	Non LSES	0.0	100.0	0.0	64.3	35.8	na	na

Student scores are reported as a percent of the total (N). Low equals the percent of students scoring less than 41%, intermediate equals the percent of students scoring 41% to 89% and high equals the percent of students scoring 90% and above. Proficient equals the intermediate scores and high scores combined.

Grade 6 Reading Comprehension

N		Non Proficient	Proficient	Low	Intermediate	High	la. Prof.	USA Prof.
34	All Students	32.3	67.7	32.3	67.7	0.0	na	60.0
18	Boys	38.9	61.1	38.9	61.1	0.0	na	na
16	Girls	25.1	75.0	25.1	75.0	0.0	na	na
17	LSES	41.1	58.8	41.1	58.8	0.0	na	na
17	Non LSES	23.5	76.5	23.5	76.5	0.0	na	na

Student scores are reported as a percent of the total (N). Low equals the percent of students scoring less than 41%, intermediate equals the percent of students scoring 41% to 89% and high equals the percent of students scoring 90% and above. Proficient equals the intermediate scores and high scores combined.

**Grade 6
Math**

N		Non Proficient	Proficient	Low	Intermediate	High	la. Prof.	USA Prof.
34	All Students	35.3	64.6	35.3	52.9	11.7	na	60.0
18	Boys	22.2	77.9	22.2	55.6	22.3	na	na
16	Girls	50.1	50.1	50.1	50.1	0.0	na	na
17	LSES	41.2	58.9	41.2	53.0	5.9	na	na
17	Non LSES	29.4	70.6	29.4	52.9	17.7	na	na

Student scores are reported as a percent of the total (N). Low equals the percent of students scoring less than 41%, intermediate equals the percent of students scoring 41% to 89% and high equals the percent of students scoring 90% and above. Proficient equals the intermediate scores and high scores combined.

Grade 6 Science

N		Non Proficient	Proficient	Low	Intermediate	High	la. Prof.	USA Prof.
34	All Students	29.4	70.5	29.4	55.8	14.7	na	60.0
18	Boys	22.2	77.8	22.2	55.6	22.2	na	na
16	Girls	37.5	62.6	37.5	56.3	6.3	na	na
17	LSES	47.1	52.9	47.1	52.9	0.0	na	na
17	Non LSES	11.8	88.2	11.8	58.8	29.4	na	na

Student scores are reported as a percent of the total (N). Low equals the percent of students scoring less than 41%, intermediate equals the percent of students scoring 41% to 89% and high equals the percent of students scoring 90% and above. Proficient equals the intermediate scores and high scores combined.

Grade 7 Reading Comprehension

N		Non Proficient	Proficient	Low	Intermediate	High	la. Prof.	USA Prof.
44	All Students	36.4	63.6	36.4	52.3	11.3	na	60.0
24	Boys	33.3	66.6	33.3	54.1	12.5	na	na
20	Girls	40.0	60.0	40.0	50.0	10.0	na	na
11	LSES	63.7	36.4	63.7	36.4	0.0	na	na
33	Non LSES	27.3	72.8	27.3	57.6	15.2	na	na

Student scores are reported as a percent of the total (N). Low equals the percent of students scoring less than 41%, intermediate equals the percent of students scoring 41% to 89% and high equals the percent of students scoring 90% and above. Proficient equals the intermediate scores and high scores combined.

**Grade 7
Math**

N		Non Proficient	Proficient	Low	Intermediate	High	la. Prof.	USA Prof.
44	All Students	27.3	72.7	27.3	61.4	11.3	na	60.0
24	Boys	25.0	75.0	25.0	70.8	4.2	na	na
20	Girls	30.0	70.0	30.0	50.0	20.0	na	na
11	LSES	54.6	45.5	54.6	45.5	0.0	na	na
33	Non LSES	18.2	81.9	18.2	66.7	15.2	na	na

Student scores are reported as a percent of the total (N). Low equals the percent of students scoring less than 41%, intermediate equals the percent of students scoring 41% to 89% and high equals the percent of students scoring 90% and above. Proficient equals the intermediate scores and high scores combined.

Grade 7 Science

N		Non Proficient	Proficient	Low	Intermediate	High	la. Prof.	USA Prof.
44	All Students	22.7	77.3	22.7	61.4	15.9	na	60.0
24	Boys	29.1	70.8	29.1	58.3	12.5	na	na
20	Girls	15.0	85.0	15.0	65.0	20.0	na	na
11	LSES	54.6	45.5	54.6	36.4	9.1	na	na
33	Non LSES	12.1	87.9	12.1	69.7	18.2	na	na

Student scores are reported as a percent of the total (N). Low equals the percent of students scoring less than 41%, intermediate equals the percent of students scoring 41% to 89% and high equals the percent of students scoring 90% and above. Proficient equals the intermediate scores and high scores combined.

Grade 8 Reading Comprehension

N		Non Proficient	Proficient	Low	Intermediate	High	Ia. Prof.	USA Prof.
43	All Students	23.3	76.8	23.3	69.8	7.0	70.6	60.0
20	Boys	30.0	70.0	30.0	65.0	5.0	68.1	na
23	Girls	17.4	82.6	17.4	73.9	8.7	73.1	na
20	LSES	30.0	70.0	30.0	70.0	0.0	51.9	na
23	Non LSES	17.3	82.6	17.3	69.6	13.0	77.8	na

Student scores are reported as a percent of the total (N). Low equals the percent of students scoring less than 41%, intermediate equals the percent of students scoring 41% to 89% and high equals the percent of students scoring 90% and above. Proficient equals the intermediate scores and high scores combined.

**Grade 8
Math**

N		Non Proficient	Proficient	Low	Intermediate	High	Ia. Prof.	USA Prof.
42	All Students	16.7	83.5	16.7	73.9	9.6	73.8	60.0
20	Boys	25.0	75.0	25.0	65.0	10.0	73.5	na
22	Girls	9.1	90.8	9.1	81.8	9.0	73.9	na
19	LSES	26.3	73.7	26.3	73.7	0.0	54.7	na
23	Non LSES	8.7	91.3	8.7	73.9	17.4	80.8	na

Student scores are reported as a percent of the total (N). Low equals the percent of students scoring less than 41%, intermediate equals the percent of students scoring 41% to 89% and high equals the percent of students scoring 90% and above. Proficient equals the intermediate scores and high scores combined.

Grade 8 Science

N		Non Proficient	Proficient	Low	Intermediate	High	Ia. Prof.	USA Prof.
42	All Students	21.4	78.5	21.4	61.9	16.6	79.2	60.0
19	Boys	31.6	68.5	31.6	52.7	15.8	77.9	na
23	Girls	13.0	86.9	13.0	69.6	17.3	80.8	na
19	LSES	31.6	68.4	31.6	68.4	0.0	63.9	na
23	Non LSES	13.0	86.9	13.0	56.5	30.4	85.2	na

Student scores are reported as a percent of the total (N). Low equals the percent of students scoring less than 41%, intermediate equals the percent of students scoring 41% to 89% and high equals the percent of students scoring 90% and above. Proficient equals the intermediate scores and high scores combined.

Grade 11 Reading Comprehension

N		Non Proficient	Proficient	Low	Intermediate	High	Ia. Prof.	USA Prof.
44	All Students	29.6	70.3	29.6	52.2	18.1	77.0	60.0
23	Boys	21.7	78.1	21.7	60.8	17.3	72.9	na
21	Girls	38.1	62.0	38.1	42.9	19.1	81.2	na
13	LSES	15.4	84.6	15.4	84.6	0.0	60.1	na
31	Non LSES	35.5	64.6	35.5	38.7	25.9	80.9	na

Student scores are reported as a percent of the total (N). Low equals the percent of students scoring less than 41%, intermediate equals the percent of students scoring 41% to 89% and high equals the percent of students scoring 90% and above. Proficient equals the intermediate scores and high scores combined.

Grade 11 Math

N		Non Proficient	Proficient	Low	Intermediate	High	Ia. Prof.	USA Prof.
44	All Students	38.6	61.3	38.6	47.7	13.6	78.4	60.0
23	Boys	26.0	73.9	26.0	56.5	17.4	78.9	na
21	Girls	52.4	47.6	52.4	38.1	9.5	78.0	na
13	LSES	53.8	46.2	53.8	30.8	15.4	61.4	na
31	Non LSES	32.3	67.7	32.3	54.8	12.9	82.5	na

Student scores are reported as a percent of the total (N). Low equals the percent of students scoring less than 41%, intermediate equals the percent of students scoring 41% to 89% and high equals the percent of students scoring 90% and above. Proficient equals the intermediate scores and high scores combined.

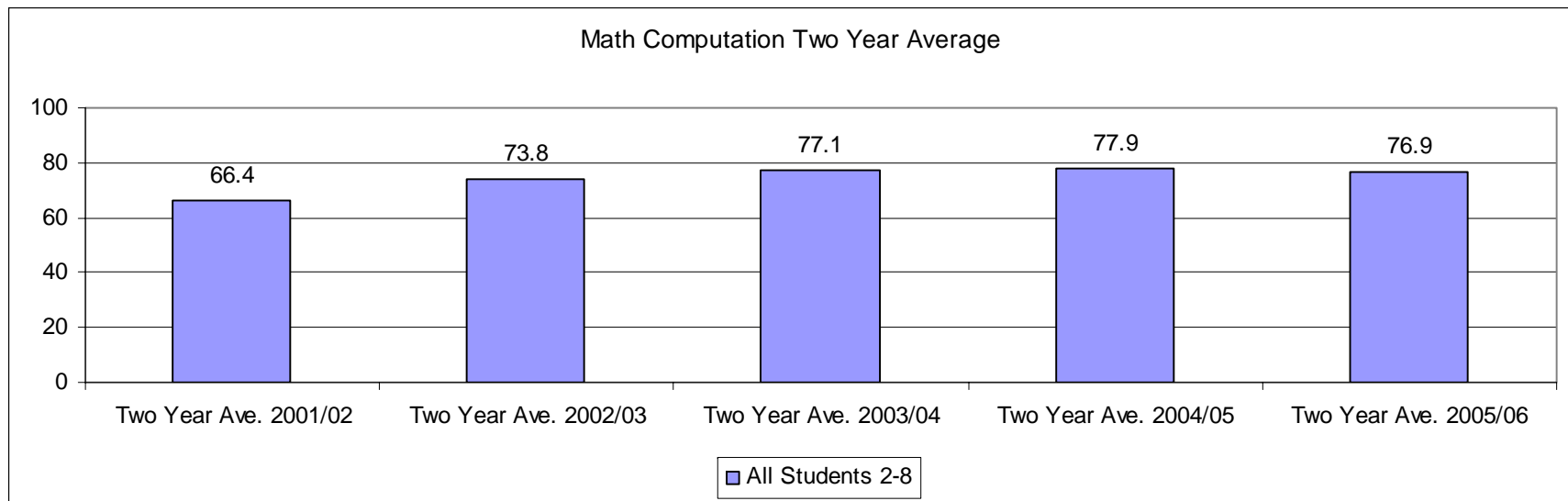
Grade 11 Science

N		Non Proficient	Proficient	Low	Intermediate	High	Ia. Prof.	USA Prof.
44	All Students	43.2	56.7	43.2	38.6	18.1	79.7	60.0
23	Boys	26.0	73.8	26.0	52.1	21.7	76.9	na
21	Girls	61.9	38.1	61.9	23.8	14.3	82.8	na
13	LSES	53.9	46.2	53.9	46.2	0.0	65.4	na
31	Non LSES	38.8	61.4	38.8	35.5	25.9	83.1	na

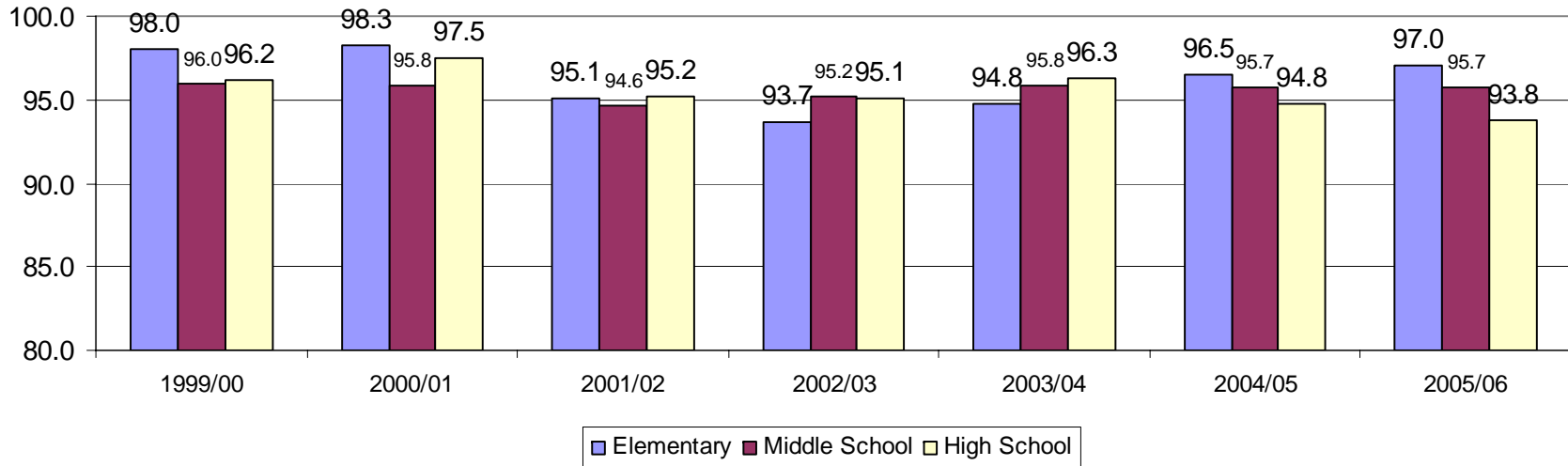
- The following pages were reported in the community calendar.

North Iowa Community Schools Math Standards - 2005-2006

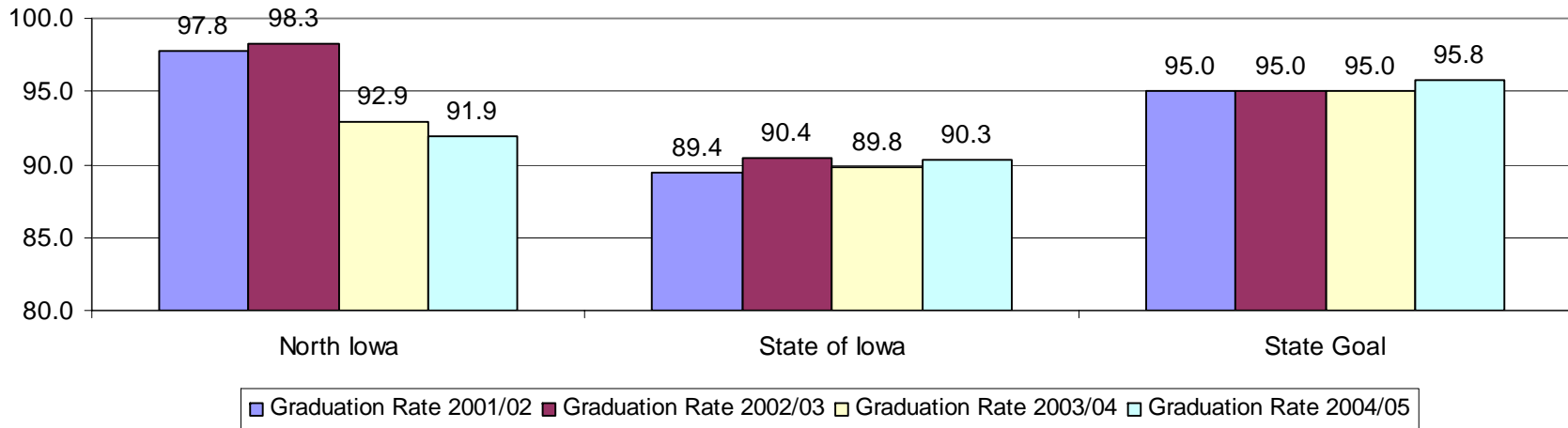
1. Uses a variety of strategies in the problem-solving process.
2. Understands and applies concepts of numbers.
3. Makes reasonable estimates and computes accurately.
4. Understands and applies concepts of measurement.
5. Understands and applies concepts of geometry.
6. Understands and applies concepts of statistics data analysis and probability.
7. Understands and applies algebra.



NICS Average Daily Attendance 2000-2006

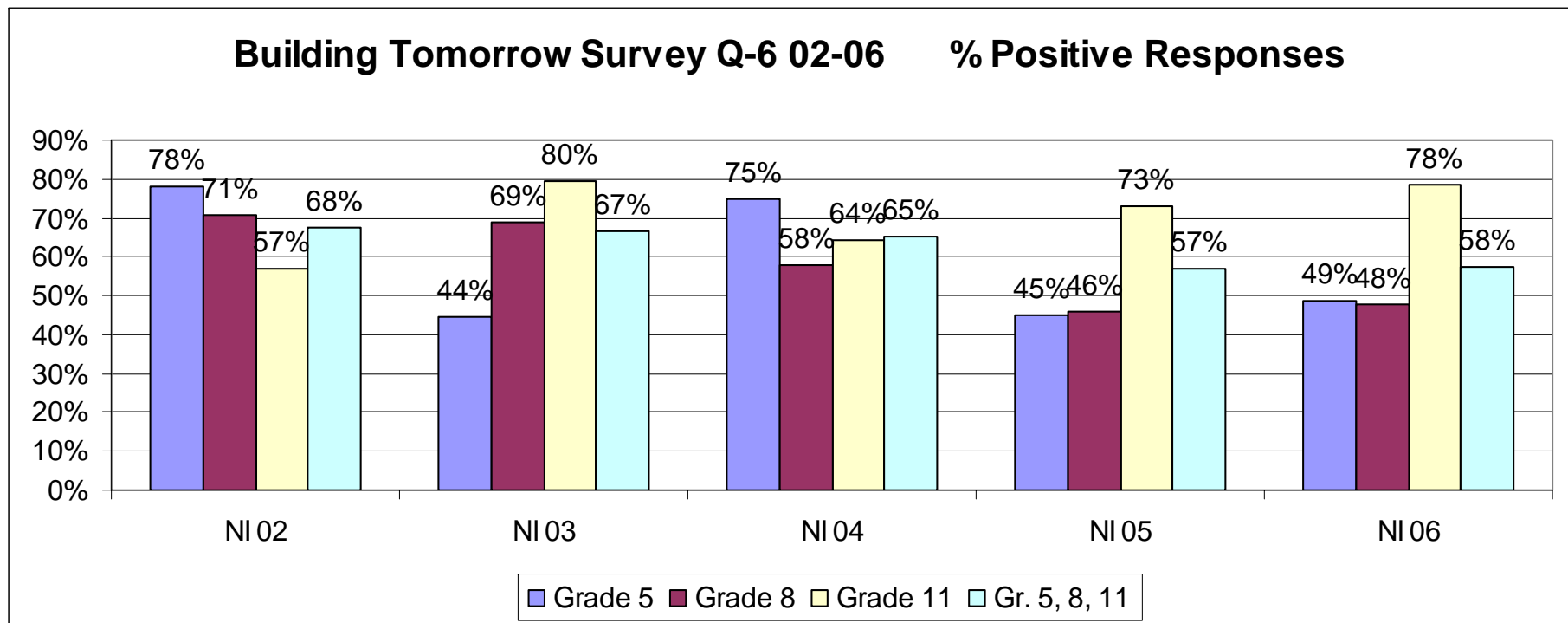


NICS Graduation Rate



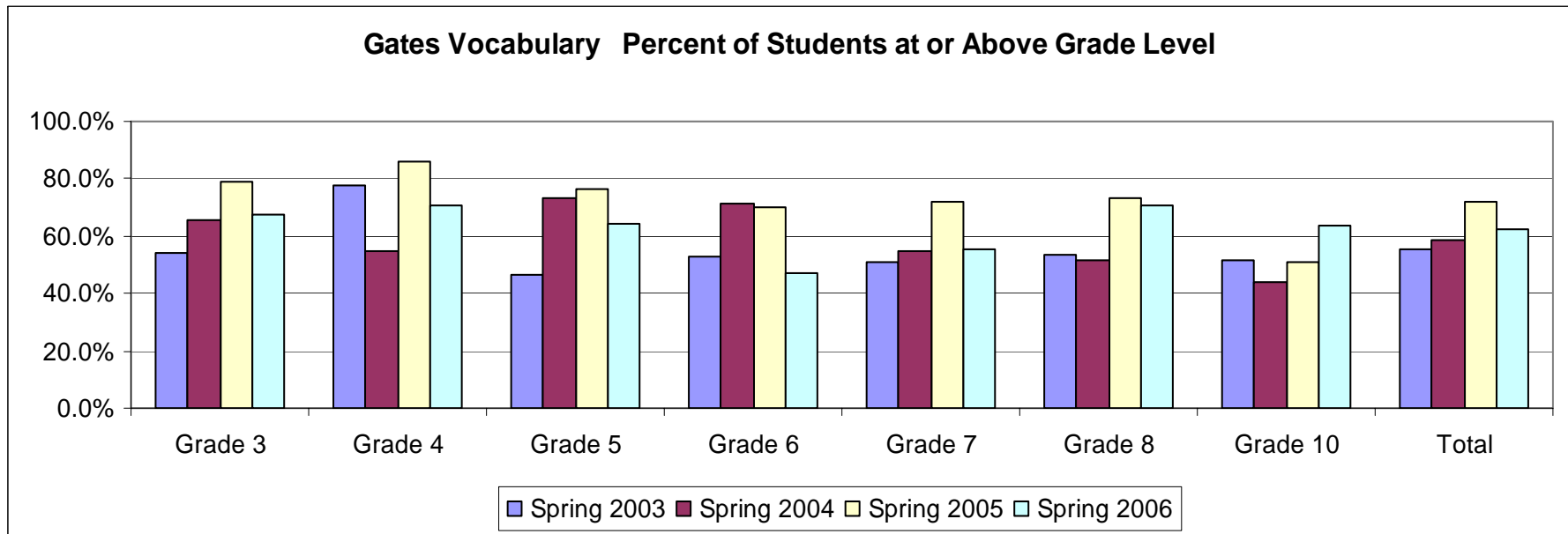
Section A Questions 1-7: Do you think students treat other students; politely, fairly, friendly, helpful, kindness or respect?

Question 6: Do you think students in this school treat other students with respect.



North Iowa Community Schools Language Arts Standards

1. Demonstrates competence in the general skills and strategies of the writing process.
2. Demonstrates competence in the stylistic and rhetorical aspects of writing.
3. Uses grammatical and mechanical conventions in written compositions.
4. Effectively gathers and uses information for research purposes.
5. Demonstrates competence in the general skills and strategies of the reading process.
6. Demonstrates competence in the general skills and strategies for a variety of literary and informational text.
7. Demonstrates competence in speaking and listening as tools for learning.



North Iowa students will be successful communicators. Successful communicators:

express needs and ideas so others understand
interprets experiences
evaluates and analyzes information
listens and perceives information from others

North Iowa students will use good problem solving skills. Successful problem solvers:

apply skills to real life situations
learn from past experiences
use a variety of appropriate technology
demonstrates appropriate risk taking
shows conflict management skills

North Iowa students will be life-long learners. Life-long learners:

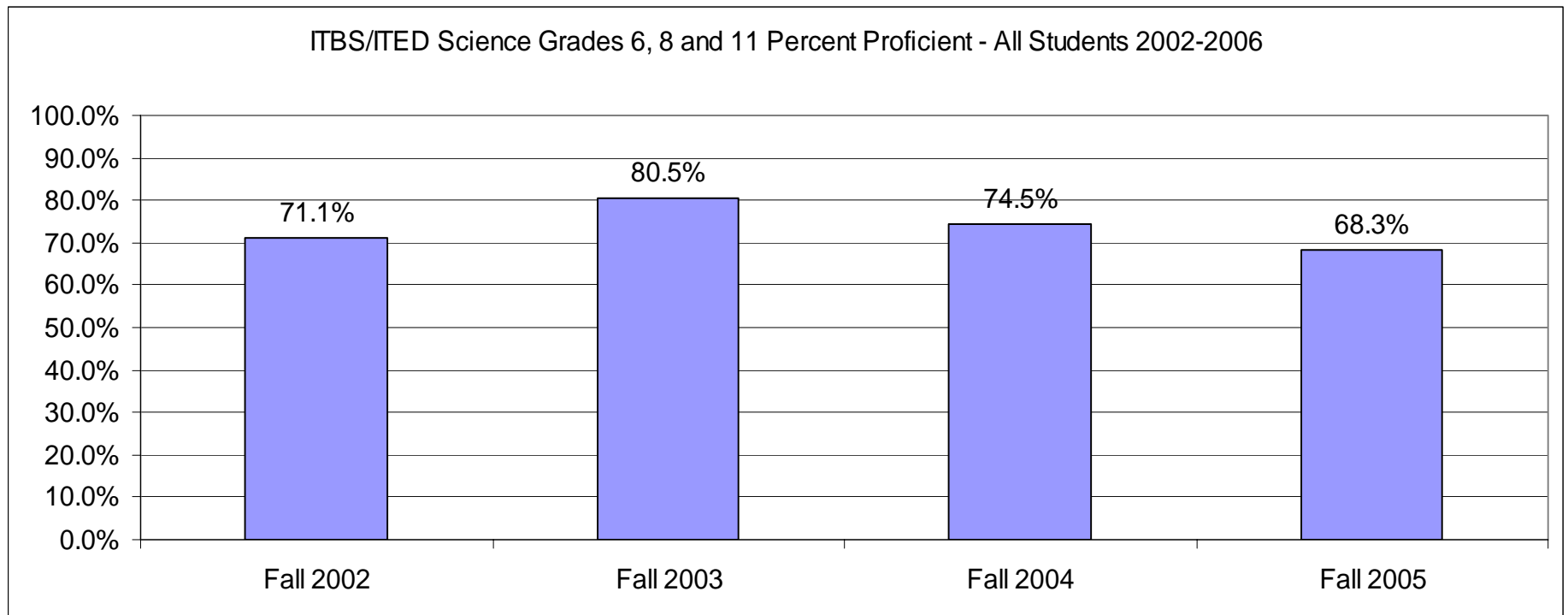
demonstrate self-sufficiency/self-directed learning
demonstrate appropriate use of resources
demonstrate adaptability to various situations
demonstrate perseverance

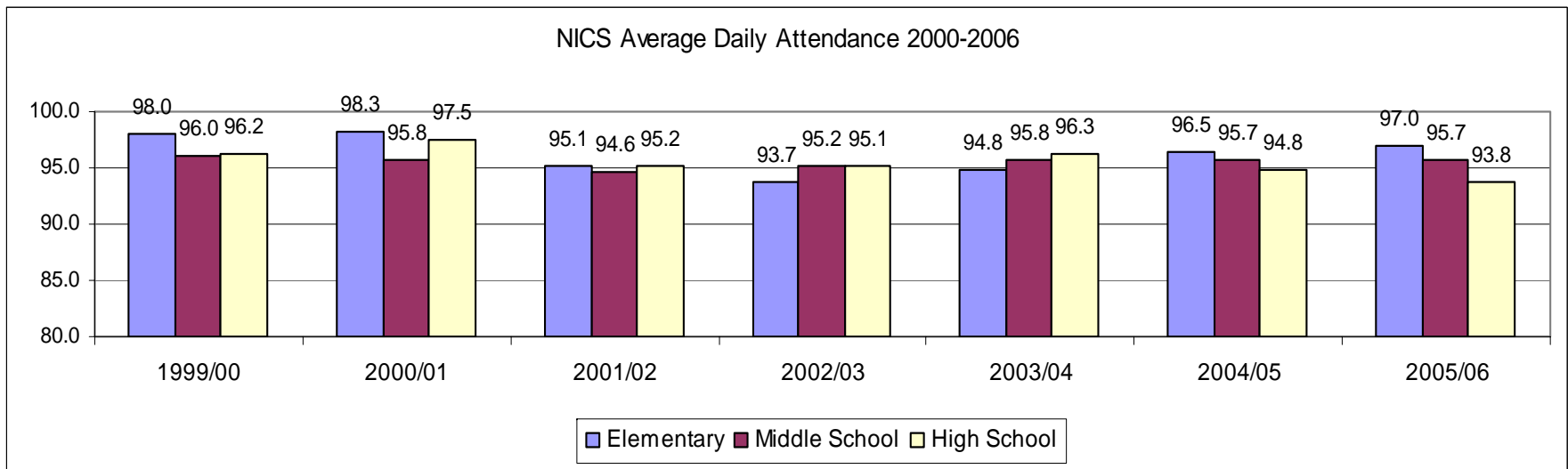
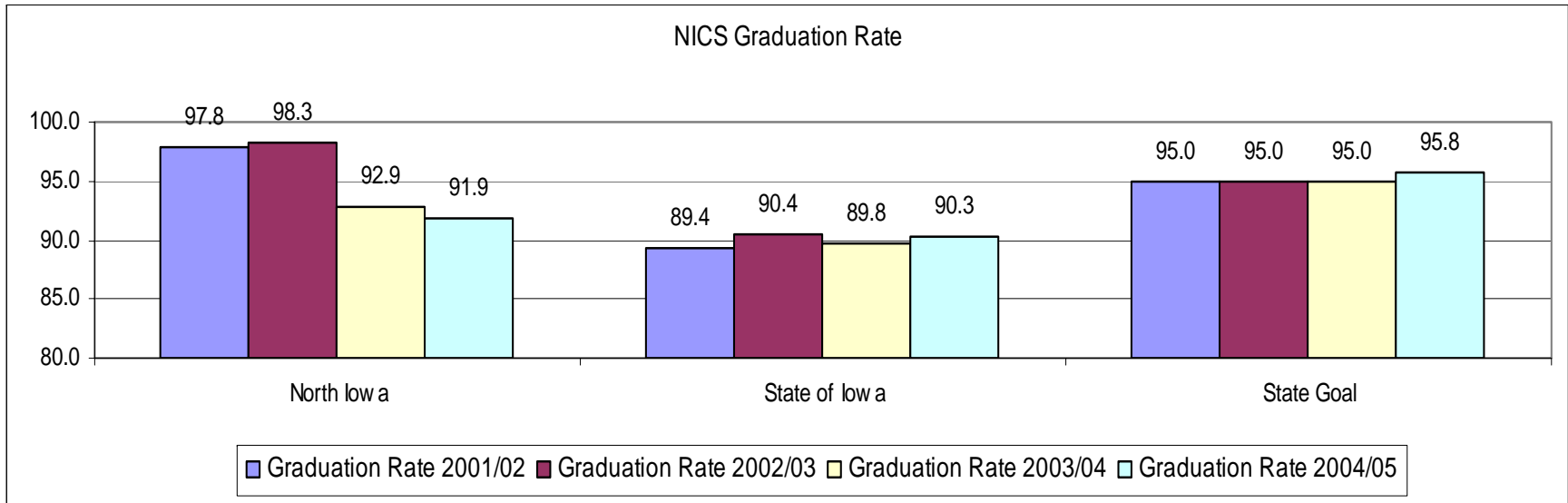
North Iowa students will practice good citizenship. Good citizens:

demonstrate responsibility and active participation in the democratic society
demonstrate effective use of social skills
shows responsibility for themselves, to others and to the world

North Iowa Community Schools Science Standards

1. Understands features of the earth, its processes, and its place in the universe.
2. Understands the structures, processes and interactions that are characteristic of living things.
3. Understands the basic concepts and properties of energy and matter.
4. Understands the nature of scientific knowledge and inquiry.





Faculty		<u>Assignment</u>	<u>at NICS</u>
Kakacek	Dave	Elem./H.S. Vocal Music	32.5
Hagedorn	Louise	Elem. Grade 4	32
Brooks	Connie	Elem. Grade 4	31
Gerzema	Dean	H.S. Ag. Science/Ag. Business	30
Jacobsen	Diane	Elem. Grade 3	30
Smith	Tom	H.S. S.S./P.E.	29
Swenson	Dean	Elem/H.S. Speech/Art	28
Will	EJ	Alternitive School	28
Andersen	Marlys	M.S. Math/L.A.	25
Friesenborg	Linda	H.S. Con. Science	25
Huntington	Brad	Elem./H.S. Guidance	25
Hill	Larry	Elem. Principal/Superintendent	24
Keil	Susan	Elem. Grade 3	22
Peake	Sue	K-12 Gifted and Talented	22
Sime	Sue	Elem. Grade K	22
Tweed	Jeannine	M.S./H.S. Business/Technology	22
DeBoer	Doug	H.S. Math	21
DeBoer	JoAnn	H.S. L.A.	21
Huntington	Loree	Elem. Grade 1	21
Leerar	Marilyn	M.S./Sp. Ed./Health	21
Lockrem	Connie	Elem. Grade K	21
Bidne	Joan	M.S. Reading/L.A.	20
Brandenburg	Kris	H.S. L.A./Sp. Ed.	20
VanderWilt	Amy	Elem./H.S. P.E.	19
Aukes	Deb	Nurse/Health	18
Hobbs	Dee	Elem. Reading	18
Jutting	Janet	Elem. Sp. Ed.	18

Coy	Diane	M.S. Cultural Arts	16
Sime	Nancy	M.S. Math/H.S. Geometry	16
Adams	Thelma	M.S. Sp. Ed.	13
Ewest	Brad	M.S. S.S./Sp. Ed./ A.D.	13
Holland	Gloria	M.S. Sp. Ed.	13
Blodgett	Brian	H.S. Science/Technology	11
Kettwick	Carole	M.S./H.S.Vocal Music/Business	10.5
Blodgett	Christina	Elem. Reading	10
Leerar	Marlene	Elem. Grade 2	10
Twait	Alan	Elem. Grade 1	10
Cook	Jeff	M.S./H.S. Instrumental	8
Evans	Michael	M.S. Principal	6
Giesking	Mary	K. Prep.	6
Potter	Jon	H.S. Social Studies	6
Anderson	Arin	Media	5
Hooper	Anthony	H.S. Science	5
Hinders	Chad	M.S. Guidance/P.E.	5
Stevens	Juanita	M.S. P.E.	5
Webb	Merrie Lyn	Elem. Pre- K	5
Geitznauer	Brenda	H.S. Science	3
Kettwick	Robin	H.S. Sp. Ed.	2
Diercks	Dan	H.S. Principal	2
Eichenberger	Graig	Elem. Gr. 2	0
Oldenkamp	Lisa	Elem. Sp. Ed.	0
Price	Mindy	M.S. Science	0
Schutjer	Jill	M.S. Science	0
Wiedeman	Kylie	M.S. L.A.	0
Cook	Amy	M.S. Instrumental	0