

North Iowa Community Schools

Buffalo Center, Rake, Lakota, Thompson
2003-2004 Annual Progress Report/Community Report

NORTH IOWA COMMUNITY SCHOOL DISTRICT
COMPREHENSIVE SCHOOL IMPROVEMENT GOALS

The data in this report is a representation of our students' progress on district goals and objectives.

The North Iowa District Advisory Committee met to review student assessment data, district goals and district action plans on January 15, 2004 and May 18, 2004. The District Advisory Committee also made recommendations which were presented to the NICS District Board of Directors on February 9, 2004 and June 14, 2004. The NICS School Improvement Team met on June 24, 2004 to review and make recommendations on all assessment data, action plans and goals. NICS Faculty Curriculum Committees also reviewed student assessment data, action plans and goals periodically during the 2003-2004 school year.

This Annual Report was presented to and approved by the NICS District Board of Directors during their regular meeting July 12, 2004.

Reading - 2003-2004

Long Term Goal: By 2005 80% of North Iowa students (in grades 4, 6, 8 and 11) will read at or above the proficient level as measured on ITBS and ITED.

Annual Goal: The percent of 2003-2004 NICS 8th grade students reading at or above grade level will increase as measured on the Spring Gates MacGinitie Reading Comprehension Assessment using two year averaging.

North Iowa 03-04 4th grade students and 8th grade students score below the state proficiency in reading comprehension for all students and all reported subgroups on the fall ITBS. North Iowa 03-04 8th grade students score above the state proficiency for all students but not the state proficiency for any reported subgroup on the fall ITBS. North Iowa 03-04 11th grade students score at or above the state proficiency in reading comprehension for all students and all reported subgroups on the fall ITED.

Spring 2004 Gates MacGinitie Reading Comprehension scores for North Iowa 03-04 8th grade students improved the percent of all students reading at or above grade level from 45.7% in 6th and 7th grade to 49.5% in 7th and 8th grade.

Spring 2004 Gates MacGinitie Reading Comprehension scores for North Iowa students improved the percent of all students reading at or above grade level in grades 1,3,4,5,6 and 7.

Subtest analysis of the Gates MacGinitie scores indicate vocabulary scores consistently lower than reading comprehension scores in grades 3, 4, 6, 7, 8 and 10. This is consistent with subtest analysis on the ITBS and ITED.

Creating Reader assessments indicate individual growth in grades 1-8 and 10-11.

Based on the data on the following pages North Iowa 2004-2005 goals and action plans in reading are as follows:

Reading - 2004-2005

Long Term Goal: All K-12 students will achieve at high levels in reading comprehension, prepared for success beyond high school.

Annual Goal: To increase percent of students in grades 3-8 and 10 scoring at or above grade level on the vocabulary subtest of the Gates MacGinitie Reading Assessment.

Action Plan for Improving Reading Achievement – 2004-2005

Long Term Goal: All K-12 students will achieve at high levels in reading comprehension, prepared for success beyond high school.

Annual Goal: To increase percent of students in grades 3-8 and 10 scoring at or above grade level on the vocabulary sub-test of the Gates MacGinitie Reading Assessment.

Data Source	Activities		Time		Person Responsible	Result
	Strategies	Steps	Begin	End		
	Continue spelling program that supports reading, phonics grades 3-8		Aug. 04	May 05	Classroom teachers	
	Vocab. Strategies workshop, "Bring Words to Life"		Aug. 04	May 05	Design Team	
	Implement DIBELS in 4 th grade and continue K-3		Aug. 04	May 05	Classroom teachers	
	Use team time to study data and plan strategies at the building level		Aug. 04	May 05	Classroom teachers	
	Explore reading training/conferences		Aug. 04	May 05	Building principals	
	Reading incentive activities at the classroom level		Aug. 04	May 05	Classroom teachers	
	Continue SSR and exploratory classes and explore at the hs level		Aug. 04	May 05	Classroom teachers/building principals	
	Creating Readers - inter rater time		Aug. 04	May 05	Building principals	

READING Fall 1998, 1999, 2000, 2001, 2002, 2003 Iowa Tests of Educational Development 4th grade students

National	Fall of	40 Low	50 Intermediate	10 High	North Iowa % proficient	State % proficient	National % proficient	% of students represented
All Students	1998							
	1999	52.2	32.6	15.2	47.8			
35	2000	22.9	62.9	14.3	77.2	67.7	60	100
41	2001 *	17.1	63.5	19.5	83	67.8	60	100
43	2002	21	58.2	20.9	79.1	69	60	100
34	2003	32.3	55.9	11.8	67.7	75.9	60	100
Low SES	1998							
	1999	66.7	26.7	6.7	33.4			
12	2000	41.7	50	8.3	58.3	51.1		100
14	2001 *	14.3	78.6	7.1	85.7	50.3		100
6	2002	0	66.6	33.3	99.9	52		100
15	2003	46.7	46.6	6.7	53.3	60.5		100
Not Low SES	1998							
	1999	45.2	35.5	19.4	54.9			
23	2000	13	69.6	17.4	87	74.7		100
27	2001 *	18.5	55.6	25.9	81.5	74.6		100
37	2002	24.3	56.7	18.9	75.6	75.7		100
19	2003	21.1	63.2	15.8	79	82.2		100
Female	1998							
	1999	30.4	60.9	8.7	69.6			
20	2000	10	75	15	90	70.9		100
24	2001 *	18.8	64.6	16.7	81.3	70.9		100
21	2002	28.6	47.6	23.8	71.4	71.8		100
17	2003	35.3	53	11.8	64.8	78.1		100
Male	1998							
	1999	38.9	27.8	33.3	61.1			
15	2000	40	46.7	13.3	60	64.6		100
17	2001 *	14.7	61.8	23.5	85.3	64.9		100
22	2002	13.6	68.2	18.2	86.4	66.4		100
17	2003	29.4	58.8	11.8	70.6	73.7		100

Reading Fall 1998, 1999, 2000, 2001, 2002, 2003 Iowa Tests of Basic Skills 6th grade students

National	Fall of	40 Low	50 Intermediate	10 High	North Iowa % proficient	State % proficient	National % proficient	% of students represented
All Students	1998							
	1999							
	2000	28.2	61.5	10.3	71.8			100
	2001	47.1	37.3	15.7	53	na	60	100
	2002	23.7	68.4	7.9	76.3		60	100
42	2003	26.2	59.5	14.3	73.8		60	100
Low SES	1998							
	1999							
	2000	38.5	53.8	7.7	61.5			100
	2001	64.3	35.7	0	35.7			100
	2002	33.3	50	16.7	66.7			100
	2003	33.3	55.6	11.1	66.7			
Not Low SES	1998							
	1999							
	2000	23.1	65.4	11.5	76.9			100
	2001	40.5	37.8	21.6	59.4			100
	2002	23.1	73.1	3.8	76.9			100
	2003	20.8	66.7	12.5	79.2			
Female	1998							
	1999							
	2000	27.8	66.7	5.6	72.3			100
	2001	54.8	38.7	6.5	45.2			100
	2002	14.3	81	4.8	85.8			100
	2003	20.8	58.3	20.8	79.2			
Male	1998							
	1999							
	2000	28.6	57.1	14.3	71.4			100
	2001	35	35	30	65			100
	2002	35.3	52.9	11.8	64.7			100
	2003	33.3	66.7	0	66.7			

READING Fall 1998, 1999, 2000, 2001, 2002, 2003 Iowa Tests of Basic Skills 8th grade students

National	Fall of	40 Low	50 Intermediate	10 High	North Iowa % proficient	State % proficient	National % proficient	% of students represented
All Students	1998	24.5	60.4	15.1	75.5			
	1999	32.7	54.5	17.7	72.2			
32	2000	27.3	54.5	18.2	72.7	69.7	60	97.1
56	2001 *	25	67.9	7.1	75	69.3	60	98.2
46	2002	39.1	47.8	13	60.8	69.4	60	100
54	2003	38.9	44.4	16.7	61.1	69.3	60	98.2
Low SES	1998	23.8	61.9	14.3	76.2			
	1999	40	53.3	6.7	60			
10	2000	50	50	0	50	50.8		90.1
22	2001 *	40.9	45.5	13.6	59.1	48.7		95.7
15	2002	43.8	43.7	12.4	56.1	49		100
12	2003	58.3	33.4	8.3	41.7	49.7		100
Not Low SES	1998	27.3	57.6	15.2	72.8			
	1999	30	55	15	70			
22	2000	18.2	54.5	27.3	81.8	75.6		100
34	2001 *	14.7	82.4	2.9	85.3	75.2		100
30	2002	36.7	50	13.4	63.4	75.2		100
42	2003	33.3	47.6	19	66.6	75.4		97.7
Female	1998	30.4	60.9	8.7	69.6			
	1999	36	56	8	64			
15	2000	35.3	47.1	17.6	64.7	72.1		100
30	2001 *	20	70	10	80	71.4		100
21	2002	47.7	38.1	14.3	52.4	71.5		100
31	2003	48.4	42	9.7	51.7	72.2		100
Male	1998	22.6	58.1	19.4	77.5			
	1999	30	53.3	17.7	71			
17	2000	20	60	20	80	67.6		94.4
26	2001 *	30.8	65.4	3.8	69.2	67.3		96.2
25	2002	32	56	12	68	67.2		100
23	2003	26.1	47.8	26.1	73.9	66.5		95.8

READING Fall 1998, 1999, 2000, 2001, 2002, 2003 Iowa Tests of Educational Development 11th grade students

National	Fall of	40 Low	50 Intermediate	10 High	North Iowa % proficient	State % proficient	National % proficient	% of students represented
All Students	1998							
	1999	16.7	61.9	21.4	83.3			
40	2000	20	47.5	32.5	80	75.1	60	100
54	2001 *	27.8	56.5	15.8	72.3	74.8	60	100
51	2002	23.5	60.8	15.7	76.5	77.1	60	100
33	2003	21.2	54.5	24.2	78.7	77	60	100
Low SES	1998							
	1999	18.2	81.8	0	81.8			
8	2000	25	62.5	12.5	75	62		100
10	2001 *	20	65	15	80	58.6		100
9	2002	33.3	55.6	11.1	66.7	60.6		100
6	2003	33.3	66.7	0	66.7	60.8		100
Not Low SES	1998							
	1999	16.1	54.8	29	83.8			
32	2000	18.8	43.8	37.5	81.3	77.2		100
44	2001 *	29.5	54.6	16	70.6	77.3		100
42	2002	21.4	61.9	16.6	78.5	79.8		100
27	2003	18.5	51.8	29.6	81.4	79.9		100
Female	1998							
	1999	5.6	61.1	33.3	94.4			
15	2000	6.7	40	53.3	93.3	81.3		100
23	2001 *	26.1	63.1	10.9	74	80.9		100
26	2002	19.2	65.3	15.4	80.7	81.9		100
15	2003	20	53.3	26.7	80	81.7		100
Male	1998							
	1999	25	62.5	12.5	75			
25	2000	28	52	20	72	68.7		100
31	2001 *	29	51.7	19.4	71.1	68.6		100
25	2002	28	56	16	72	72		100
18	2003	22.3	55.5	22.3	77.8	72.6		100

Spring 2000, 2001, 2002, 2003, 2004 Gates MacGinitie Reading Comprehension

	1	2	3	4	5	6	7	8	10
1999-2000*	50	51		44.4			68.5		
2000-2001	63.3	54.1	47.6	58.8	37.5	47.2	56.6	60	50.9
2001-2002	71.1	48.4	56.8	70	67.6	46.2	52.5	58.5	40.4
2002-2003	57.9	69	62.9	55	61	68.4	45.3	62.2	64.7
2003-2004	58.3	64.1	65.9	63.6	62.8	81	59.5	53.6	45.3

* Not all students represented

Spring 2001 - 2004 Gates MacGinitie Reading results, 5th/6th/7th/8th grade students, class of 2008

	Spring of	Low	Intermediate	High	Proficient	N =	Above Grade Level	Below Grade Level
All Students	2001	50	22.9	27.1	50	48	37.5	62.5
	2002	46.2	19.2	34.6	53.8	52	46.2	53.8
	2003	47.2	22.6	30.2	52.3	53	45.3	54.7
	2004	30.3	23.2	46.4	69.6	56	53.6	46.4
Boys	2001	42.1	26.3	31.6	57.9		42.1	57.9
	2002	30	10	60	70		70	30
	2003	40.9	13.6	45.5	59.1	22	59.1	40.9
	2004	30.8	23.1	46.2	69.2	26	53.8	47.2
Girls	2001	55.2	20.7	24.1	44.8		34.5	65.5
	2002	53.1	28.1	18.8	46.9		31.2	68.8
	2003	58.1	22.6	19.4	42	31	35.5	64.5
	2004	30	23.3	46.7	70	30	50	50
LSES	2001	60	20	20	40		30	70
	2002	50	6.2	43.8	50		43.8	56.2
	2003	62.5	12.5	25	37.5	16	37.5	62.5
	2004	47.1	17.6	35.3	64.7	17	41.2	58.8
not LSES	2001	47.4	23.7	28.9	52.6		39.5	60.5
	2002	38.9	27.8	33.3	61.1		47.2	52.8
	2003	40.5	27	32.4	59.4	37	48.6	51.4
	2004	23.1	25.6	51.3	76.9	39	56.4	43.6

2001 5th grade and 2002 6th grade			
42	n = 42/100	5	18/48
2002 6th grade and 2003 7th grade		24/52	
45.7	n = 48/105	7	24/53
2003 7th grade and 2004 8th grade		30/56	
49.5	n = 54/109		

Math - 2003-2004

Long Term Goal: By 2005 80% of North Iowa students will be able to complete math computations at the proficient level as measured on the District Computation test grades 2-8.

Annual Goal: The percent of 2003-2004 North Iowa students in grades 2-8 scoring at the proficient level (70%+) on the District Computation Test will increase using two year averaging.

North Iowa 03-04 4th grade students score at or above the state proficiency in math for all students and reported subgroups (boys and not LSES) on the fall ITBS. North Iowa 03-04 8th grade students exceed the state proficiency in math for all students and reported subgroups (boys and LSES) on the fall ITBS. North Iowa 03-04 11th grade students score at or above the state proficiency in math for LSES and girls on the fall ITED.

The District Computation Test was given to all North Iowa students grades 2-8 and 10. The percent of students proficient increased from 75.4 in 2003 to 78.7 in 2004. Two year average scores increased from 73.8 proficient in 2002/03 to 77.1 in 2003/04.

Math Exemplar assessments indicate growth in grades K-8 and 10.

Based on the data on the following pages North Iowa 2004-2005 goals and action plans in math are as follows:

Math - 2004-2005

Long Term Goal: All K-12 students will achieve at high levels in mathematics, prepared for success beyond high school.

Annual Goal: The percent of students scoring proficient (70%) on the district Computation Test (grades 2-8) and the district Algebra Test (grade 10) will increase using two-year averaging.

Action Plan for Improving Math Achievement – 2004-2005

Long Term Goal: All K-12 students will achieve at high levels in mathematics, prepared for success beyond high school.

Annual Goal: The percent of students scoring proficient (70%) on the district Computation Test (grades 2-8) and the district Algebra Test (grade 10) will increase using two-year averaging.

Data Source	Activities		Time		Person Responsible	Result
	Strategies	Steps	Begin	End		
	Develop algebra assessment		Aug. 04	Sept. 04	Hs classroom teachers, AEA consultants	
	Investigate Title I And other funding sources (REAP)		Aug. 04	May 05	Building principals	
	Revise exemplar scoring etc.		Aug. 04	May 05	Classroom teachers	
	Attend and in-service faculty NCTM Conference		Aug. 04	May 05	Building principals	
	Computation strategies in-service		Aug. 04	May 05	AEA consultants	
	AEA math training and seminars		Aug. 04	May 05	Design Team	

MATH Fall 1998, 1999, 2000, 2001, 2002, 2003 Iowa Tests of Basic Skills 4th grade students

National	Fall of	40 Low	50 Intermediate	10 High	North Iowa % proficient	State % proficient	National % proficient	% of students enrolled represented in the data
All Students	1998							
	1999	23.6	65.5	10.9	76.4			
35	2000	11.4	77.1	11.4	88.5	71	60	100
41	2001 *	12.2	70.7	17.1	87.8	71.4	60	100
43	2002	16.3	60.5	23.3	83.8	72.4	60	100
34	2003	23.5	52.9	23.5	76.4	75	60	100
Low SES	1998							
	1999	40	60	0	60			
12	2000	25	58.3	16.7	75	54.5		100
14	2001 *	14.3	78.6	7.1	85.7	55.3		100
6	2002	0	83.3	16.7	100	56.4		100
15	2003	46.7	40	13.3	53.3	59.4		100
Not Low SES	1998							
	1999	17.5	67.5	15	82.5			
23	2000	4.3	87	8.7	95.7	78.1		100
27	2001 *	11.1	66.7	22.2	88.9	78		100
37	2002	18.9	56.7	24.3	81	78.6		100
19	2003	5.3	63.2	31.6	94.8	81.3		100
Female	1998							
	1999	20	68	12	80			
20	2000	10	85	5	90	70.4		100
24	2001 *	16.7	75	8.3	83.3	70.8		100
21	2002	28.6	52.3	19.1	71.4	71.3		100
17	2003	35.3	58.8	5.9	64.7	74.2		100
Male	1998							
	1999	26.7	63.3	10	73.3			
15	2000	13.3	66.7	20	86.7	71.9		100
17	2001 *	5.9	64.7	29.4	94.1	72.6		100
22	2002	4.5	68.2	27.2	95.4	73.3		100
17	2003	11.8	47	41.1	88.1	75.9		100

MATH Fall 1998, 1999, 2000, 2001, 2002, 2003 Iowa Tests of Basic Skills 6th grade students

National	Fall of	40 Low	50 Intermediate	10 High	North Iowa % proficient	State % proficient	National % proficient	% of students enrolled represented in the data
All Students	1998							
	1999							
	2000	38.5	53.8	7.7	61.5			
	2001	27.5	58.8	13.7	72.5	na	60	100
	2002	26.3	63.2	10.5	73.7		60	100
42	2003	14.3	71.4	14.3	85.7		60	100
Low SES	1998							
	1999							
	2000	46.2	46.2	7.7	53.9			100
	2001	42.9	50	7.1	57.1			100
	2002	33.3	66.7	0	66.7			100
	2003	22.2	66.7	11.1	77.8			
Not Low SES	1998							
	1999							
	2000	34.6	57.7	7.7	65.4			100
	2001	21.6	62.2	16.2	78.4			100
	2002	23.1	61.5	15.4	76.9			100
	2003	8.3	70.8	20.8	91.7			
Female	1998							
	1999							
	2000	55.6	44.4	0	44.4			100
	2001	29	64.5	6.5	71			100
	2002	28.6	57.1	14.3	71.4			100
	2003	12.5	79.2	8.3	87.5			
Male	1998							
	1999							
	2000	23.8	61.9	14.3	76.2			100
	2001	25	50	25	75			100
	2002	25.5	70.6	5.9	76.5			100

MATH Fall 1998, 1999, 2000, 2001, 2002, 2003 Iowa Tests of Basic Skills 8th grade students

National	Fall of	40 Low	50 Intermediate	10 High	North Iowa % proficient	State % proficient	National % proficient	% of students enrolled represented in the data
All Students	1998	20.8	67.9	11.3	79.2			
	1999	23.6	65.5	10.9	76.4			
	32 2000	18.2	63.6	18.2	81.8	74.1	60	97.1
	56 2001 *	29.5	54.5	16.1	70.6	73.6	60	98.2
	46 2002	41.3	47.8	10.8	58.6	73.1	60	100
54 2003	27.8	53.6	18.5	72.2	71.6	60	98.2	
Low SES	1998	23.8	76.2	0	76.2			
	1999	40	60	0	60			
	10 2000	30	60	10	70	55.3		90.1
	22 2001 *	40.9	36.4	22.7	59.1	53.3		95.7
	15 2002	50	37.5	12.4	49.9	52.3		100
12 2003	41.7	33.3	25	58.3	50.9		100	
Not Low SES	1998	18.2	63.6	18.2	81.8			
	1999	17.5	67.5	15	82.5			
	22 2000	13.6	63.6	22.7	86.3	80.1		100
	34 2001 *	22.1	65.8	11.8	77.6	79.8		100
	30 2002	36.7	53.4	10	63.4	79.3		100
42 2003	23.8	59.5	16.7	76.2	78		97.7	
Female	1998	30.4	65.2	4.3	69.5			
	1999	20	68	12	80			
	15 2000	20	66.7	13.3	80	74.9		100
	30 2001 *	30	56.7	13.3	70	74.2		100
	21 2002	61.9	28.6	9.6	38.2	73.3		100
31 2003	35.5	54.8	9.7	64.5	71.6		100	
Male	1998	22.6	71	16.1	87.1			
	1999	26.7	63.3	10	73.3			
	17 2000	17.6	58.8	23.5	82.3	73.4		94.4
	26 2001 *	28.9	51.9	19.2	71.1	73.2		96.2
	25 2002	24	64	12	76	72.6		100
23 2003	17.3	52.2	30.4	82.6	71.2		95.8	

MATH Fall 1998, 1999, 2000, 2001, 2002, 2003 Iowa Tests of Educational Development 11th grade students

National	Fall of	40 Low	50 Intermediate	10 High	North Iowa % proficient	State % proficient	National % proficient	% of students enrolled represented in the data
All Students	1998							
	1999	16.7	66.7	16.7	83.4			
40	2000	15	62.5	22.5	85	80.1	60	100
54	2001 *	23.2	60.2	16.7	76.9	79.6	60	100
51	2002	29.5	62.8	7.8	70.6	81.3	60	100
33	2003	21.2	57.5	21.2	78.7	79.2	60	100
Low SES	1998							
	1999	27.3	54.5	18.2	72.7			
8	2000	0	87.5	12.5	100	68.6		100
10	2001 *	20	60	20	80	65.7		100
9	2002	33.3	66.7	0	66.7	66		100
6	2003	33.3	66.7	0	66.7	62.4		100
Not Low SES	1998							
	1999	12.9	71	16.1	87.1			
32	2000	18.8	56.3	25	81.3	82.2		100
44	2001 *	23.2	60.3	16	76.3	81.6		100
42	2002	28.6	61.9	9.5	71.4	83.9		100
27	2003	18.5	55.5	25.9	81.4	82.2		100
Female	1998							
	1999	5.6	77.8	16.7	94.5			
15	2000	0	80	20	100	80.5		100
23	2001 *	28.3	65.2	6.5	71.7	80		100
26	2002	26.9	65.4	7.7	73.1	81.7		100
15	2003	20	66.7	13.3	80	78.9		100
Male	1998							
	1999	25	50	25	75			
25	2000	24	52	24	76	79.8		100
31	2001 *	19.2	56.5	24.2	80.7	79.1		100
25	2002	32	60	8	68	81.2		100
18	2003	22.2	50	27.8	77.8	79.5		100

Spring 2001, 2002, 2003, 2004 District Computation Test, 2nd grade students

	Spring of	Low	Intermediate	High	% proficient	N =
All Students	2001	13.9	71.8	15.4	87.2	
	2002	0	29	71	100	
	2003	2.4	7.1	90.5	97.6	42
	2004	2.6	17.9	79.5	97.4	39
Low SES	2001	15.4	69.2	15.4	84.6	
	2002	0	31.2	68.8	100	
	2003	0	11.1	88.9	100	9
	2004	0	25	75	100	16
Not Low SES	2001	11.5	73.1	15.4	88.5	
	2002	0	26.7	73.3	100	
	2003	3	6.1	90.9	97	33
	2004	4.3	13	82.6	95.7	23
Female	2001	20	65	15	80	
	2002	0	28.6	71.4	100	
	2003	0	10.5	89.4	100	19
	2004	5.3	21.1	73.7	94.7	19
Male	2001	5.3	78.9	15.8	94.7	
	2002	0	29.4	70.6	100	
	2003	4.3	4.3	91.3	95.6	23
	2004	0	15	85	100	20

Spring 2001, 2002, 2003, 2004 District Computation Test, 3rd grade students

	Spring of	Low	Intermediate	High	% proficient	N =
All Students	2001	0	21.4	78.6	100	
	2002	0	8.1	91.9	100	
	2003	0	12.1	87.9	100	33
	2004	0	7.3	92.7	100	41
Low SES	2001	0	26.7	73.3	100	
	2002	0	9.1	90.9	100	
	2003	0	14.3	85.7	100	14
	2004	0	7.7	92.3	100	13
Not Low SES	2001	0	18.5	81.5	100	
	2002	0	7.7	92.3	100	
	2003	0	10.5	89.5	100	19
	2004	0	7.1	92.9	100	28
Female	2001	0	25	75	100	
	2002	0	5.3	94.7	100	
	2003	0	12.5	87.5	100	16
	2004	0	12.5	87.5	100	16
Male	2001	0	16.7	83.3	100	
	2002	0	11.1	88.9	100	
	2003	0	11.8	88.2	100	17
	2004	0	4	96	100	25

Spring 2001, 2002, 2003, 2004 District Computation Test, 4th grade students

	Spring of	Low	Intermediate	High	% proficient	N =
All Students	2001	5.9	20.6	67.6	88.2	
	2002	0	25	75	100	
	2003	11.6	51.2	37.2	88.4	43
	2004	3	24.2	72.7	97	33
Low SES	2001	18.2	36.4	45.5	81.9	
	2002	0	35.3	64.7	100	
	2003	16.7	58.3	25	83.3	12
	2004	6.3	31.3	62.5	93.8	16
Not Low SES	2001	0	21.7	78.3	100	
	2002	0	17.4	82.6	100	
	2003	9.7	48.4	41.9	90.3	31
	2004	0	17.6	82.4	100	17
Female	2001	5.3	21.1	73.7	94.8	
	2002	0	20.8	79.2	100	
	2003	18.2	40.9	40.9	81.8	22
	2004	0	25	75	100	16
Male	2001	6.7	33.3	60	93.3	
	2002	0	31.2	68.8	100	
	2003	4.8	61.9	33.3	95.2	21
	2004	5.9	23.5	70.6	94.1	17

Spring 2001, 2002, 2003, 2004 District Computation Test, 5th grade students

	Spring of	Low	Intermediate	High	% proficient	N =
All Students	2001	28.9	54.3	28.9	83.2	
	2002	8.8	35.3	55.9	91.2	
	2003	2.5	27.5	70	97.5	40
	2004	16.3	27.9	55.8	83.7	43
Low SES	2001	23.1	53.8	23.1	76.9	
	2002	0	53.8	46.2	100	
	2003	6.3	31.3	62.5	93.8	16
	2004	28.6	50	21.4	71.4	14
Not Low SES	2001	31.2	37.5	31.2	68.7	
	2002	14.3	23.8	61.9	85.7	
	2003	0	25	75	100	24
	2004	10.3	13.8	75.8	89.7	29
Female	2001	23.1	42.3	34.6	76.9	
	2002	4.8	23.8	71.4	95.2	
	2003	0	18.2	81.8	100	22
	2004	14.3	28.6	57.1	8.7	21
Male	2001	36.8	42.1	21.1	63.2	
	2002	15.4	53.8	30.8	84.6	
	2003	5.6	38.9	55.6	94.5	18
	2004	18.2	22.7	59.1	81.8	22

Spring 2001, 2002, 2003, 2004 District Computation Test, 6th grade students

	Spring of	Low	Intermediate	High	% proficient	N =
All Students	2001	56.2	37.5	6.2	43.7	
	2002	52.8	34	13.2	47.2	
	2003	39.5	31.6	28.9	60.5	38
	2004	26.2	47.6	26.2	73.8	42
Low SES	2001	54.5	45.5	0	45.5	
	2002	66.7	20	13.3	33.3	
	2003	36.4	45.5	18.2	63.7	11
	2004	36.8	63.2	0	63.2	19
Not Low SES	2001	57.1	33.3	9.5	42.8	
	2002	47.7	39.5	13.2	52.6	
	2003	40.7	25.9	33.3	59.2	27
	2004	17.4	34.8	47.8	82.6	23
Female	2001	62.5	31.2	6.2	37.4	
	2002	56.2	28.1	15.6	43.8	
	2003	28.6	28.6	42.9	71.5	21
	2004	25	45.8	29.2	75	24
Male	2001	50	43.8	6.2	50	
	2002	47.6	42.9	9.5	52.4	
	2003	52.9	35.3	11.8	47.1	17
	2004	22.2	55.6	22.2	77.8	18

Spring 2001, 2002, 2003, 2004 District Computation Test, 7th grade students

	Spring of	Low	Intermediate	High	% proficient	N =
All Students	2001	82.7	13.5	3.8	17.3	
	2002	51.2	26.8	22	48.8	
	2003	54.7	26.4	18.9	45.3	53
	2004	45.2	35.7	19	54.8	42
Low SES	2001	80	13.3	6.7	20	
	2002	58.8	17.6	23.5	41.2	
	2003	71.4	21.4	7.1	28.5	14
	2004	53.3	33.3	13.3	46.7	15
Not Low SES	2001	83.8	13.5	2.7	16.2	
	2002	45.8	33.3	20.8	54.2	
	2003	48.7	28.2	23.1	51.3	39
	2004	40.7	37	22.2	59.3	27
Female	2001	82.2	14.3	3.6	17.9	
	2002	55	35	10	45	
	2003	61.3	25.8	12.9	38.7	31
	2004	34.8	39.1	26.1	65.2	23
Male	2001	83.3	12.5	4.2	16.7	
	2002	47.6	19	33	52.4	
	2003	45.5	27.3	27.3	54.6	22
	2004	57.9	31.6	10.5	42.1	19

Spring 2001, 2002, 2003, 2004 District Computation Test, 8th grade students

	Spring of	Low	Intermediate	High	% proficient	N =
All Students	2001	64.7	29.4	5.9	35.3	
	2002	51.9	37	11.1	48.1	
	2003	48.9	33.3	17.8	51.1	45
	2004	42.9	39.3	17.9	57.1	56
Low SES	2001	70	30	0	30	
	2002	61.9	33.3	4.8	38.1	
	2003	58.8	29.4	11.8	41.2	17
	2004	64.7	23.5	11.8	35.3	17
Not Low SES	2001	62.5	29.2	8.3	37.5	
	2002	45.5	39.4	15.2	54.5	
	2003	42.9	35.7	21.4	57.1	28
	2004	33.3	46.2	20.5	66.7	39
Female	2001	68.8	25	6.2	31.2	
	2002	50	35.7	14.3	50	
	2003	61.9	23.8	14.3	38.1	21
	2004	40	40	20	60	30
Male	2001	61.1	33.3	5.6	38.9	
	2002	53.8	38.5	7.7	46.2	
	2003	37.5	41.7	20.8	62.5	24
	2004	46.2	38.5	15.4	53.8	26

Spring 2001, 2002, 2003, 2004 District Computation Test, 10th grade students

	Spring of	Low	Intermediate	High	% proficient	N =
All Students	2001	70.6	19.6	7.8	27.4	
	2002	75.5	20.4	4.1	24.5	
	2003	44.1	44.1	11.8	55.9	34
	2004	64.2	28.3	7.5	35.8	53
Low SES	2001	80	10	10	20	
	2002	100	0	0	0	
	2003	55.6	33.3	11.1	44.4	9
	2004	65	25	10	35	20
Not Low SES	2001	69.2	23.1	7.8	30.9	
	2002	69.2	25.6	5.1	30.8	
	2003	40	48	12	60	25
	2004	63.6	30.3	6.1	36.4	33
Female	2001	71.4	28.6	0	28.6	
	2002	70.8	25	4.2	29.2	
	2003	37.5	50	12.5	62.5	16
	2004	69	20.7	10.3	31	29
Male	2001	73.3	13.3	13.3	26.6	
	2002	40	16	4	20	
	2003	50	38.9	11.1	50	18
	2004	58.3	37.5	4.2	41.7	24

All students grades 2-8 percent proficient

Spring of 2001	60.3	172/285			
2002	72.4	210/290	2001/02	66.4	382/575
2003	75.4	221/293	2002/03	73.8	431/584
2004	78.7	233/296	2003/04	77.1	454/589

	2001	2002	2003	2004
Grade 2	87.2	100	97.6	97.4
Grade 3	100	100	100	100
Grade 4	88.2	100	88.4	97
Grade 5	83.2	91.2	97.5	83.7
Grade 6	43.7	47.2	60.5	73.8
Grade 7	17.3	48.8	45.3	54.8
Grade 8	35.3	48.1	51.1	57.1

Grade 10	27.4	24.5	55.9	35.8
----------	------	------	------	------

Science - 2003-2004

Long Term Goal: By 2005 75% of North Iowa students will score at the proficient level or higher on ITBS and ITED composite science score.

Annual Goal: The percent of 2003-2004 North Iowa students in grades 6, 8 and 11 that score at the intermediate level or higher will increase (ITBS and ITED) or the percent of students scoring at the proficient level (3 or higher) will increase from fall to spring on the district science assessment grades 5-8 and 10.

North Iowa 03-04 6th grade students exceed the national proficiency percentage for all on the ITBS science assessment. North Iowa 03-04 8th grade students exceed the national proficiency percentage for all students on the ITBS science assessment. North Iowa 03-04 8th grade students do not exceed the state proficiency for all students or any reported subgroup on the fall ITBS science assessment. North Iowa 03-04 11th grade students exceed the Iowa and national proficiency percentage for all students and all subgroups on the ITED science assessment. The total percent of students proficient in grades 6, 8 and 11 was 71.1 in 2002 and 80.5 in 2003.

Science Exemplar assessments show individual growth for all students grades 5-8 and 10.

Based on the data on the following pages North Iowa 2004-2005 goals and action plans in science are as follows:

Science - 2004-2005

Long Term Goal: All K-12 students will achieve at high levels in science, prepared for success beyond high school.

Annual Goal: The percent of students in grades 6, 8 and 11 that score at the intermediate level or higher will increase (ITBS, ITED) or the percent of students scoring proficient (3 or higher) will increase from fall to spring on the district science assessment (grades 5-8 and 10).

Action Plan for Improving Science Achievement – 2004-2005

Long Term Goal: All K-12 students will achieve at high levels in science, prepared for success beyond high school .

Annual Goal: The percent of students in grades 6, 8 and 11 that score at the intermediate level or higher will increase (ITBS, ITED) or the percent of students scoring proficient (3 or higher) will increase from fall to spring on the district science assessment (grades 5-8 and 10).

Data Source	Activities		Time		Person Responsible	Result
	Strategies	Steps	Begin	End		
	Strategies that reflect sci. inquiry		Aug. 04	May 05	Classroom teachers	
	Align curriculum with standards		Aug. 04	May 05	Classroom teachers	
	Evaluate exemplar assessment		Aug. 04	May 05	Classroom teachers	
	Investigate integrating reading practice into the curriculum		Aug. 04	May 05	Classroom teachers	
	Technology integration		Aug. 04	May 05	Classroom teachers	

SCIENCE Fall 1998, 1999, 2000, 2001, 2002, 2003 Iowa Tests of Basic Skills 6th grade students

National		40	50	10	North Iowa	State	National	% of students enrolled
	Fall of	Low	Intermediate	High	% proficient	% proficient	% proficient	represented in the data
All Students	1998							
	1999							
	2000	23.1	51.3	25.6	76.9			100
	2001 *	23.5	58.8	17.6	76.4	na	60	100
	2002	26.3	71.1	2.6	73.7		60	100
42	2003	14.3	71.4	14.3	84.7		60	100
Low SES	1998							
	1999							
	2000	23.1	46.2	30.1	76.3			100
	2001 *	35.7	64.3	0	64.3			100
	2002	33.3	66.7	0	66.7			100
	2003	22.2	77.8	0	77.8			
Not Low SES	1998							
	1999							
	2000	12.8	53.8	23.1	76.9			100
	2001 *	18.9	56.8	24.3	81.1			100
	2002	23.1	73.1	3.8	76.9			100
	2003	8.3	66.7	25	91.7			
Female	1998							
	1999							
	2000	38.9	55.6	5.6	61.2			100
	2001 *	29	61.3	9.7	71			100
	2002	33.3	61.9	4.8	66.7			100
	2003	12.5	70.8	16.7	87.5			
Male	1998							
	1999							
	2000	9.5	47.6	42.9	90.5			100
	2001 *	15	55	30	85			100
	2002	17.4	82.4	0	82.4			100
	2003	16.7	72.2	11.1	83.3			

SCIENCE Fall 1998, 1999, 2000, 2001, 2002, 2003 Iowa Tests of Basic Skills 8th grade students

National	Fall of	40 Low	50 Intermediate	10 High	North Iowa % proficient	State % proficient	National % proficient	% of students enrolled represented in the data
All Students	1998							
	1999	30	58.5	11.3	69.8			
32	2000	15.2	63.6	21.2	84.8		60	97.1
56	2001	26.8	67.9	5.4	73.3		60	98.2
46	2002	26.1	52.1	21.7	73.8		60	100
53	2003	28.3	52.8	18.9	71.7	77.3	60	98.1
Low SES	1998							
	1999	46.7	40	13.3	53.3			
10	2000	18.2	72.7	9.1	81.8			90.1
22	2001 *	31.8	59.1	9.1	68.2			95.7
15	2002	37.5	50	12.4	62.4			100
12	2003	58.3	33.4	8.3	41.7	60.2		100
Not Low SES	1998							
	1999	10.8	67.6	21.6	89.2			
22	2000	13.6	59.1	27.3	86.4			100
34	2001 *	23.5	73.5	2.9	76.4			100
30	2002	20	53.3	26.7	80			100
41	2003	19.5	58.5	22	80.5	82.6		97.6
Female	1998							
	1999	16	76	8	84			
15	2000	6.3	75	18.8	93.8			100
30	2001 *	30	63.3	6.7	70			100
21	2002	42.9	42.8	14.3	57.1			100
30	2003	36.6	53.3	10	63.3	79		100
Male	1998							
	1999	25.9	44.4	29.6	74			
17	2000	23.5	52.9	23.5	76.4			94.4
26	2001 *	23.1	73.1	3.8	76.9			96.2
25	2002	12	60	28	88			100
23	2003	17.4	52.2	30.4	82.6	75.6		95.8

SCIENCE Fall 1998, 1999, 2000, 2001, 2002, 2003 Iowa Tests of Educational Development 11th grade students

National	Fall of	40 Low	50 Intermediate	10 High	North Iowa % proficient	State % proficient	National % proficient	% of students enrolled represented in the data
All Students	1998							
	1999	28.6	51.4	20	71.4			
40	2000	12.5	55	32.5	87.5		60	100
54	2001 *	38.9	44.4	16.7	61.1			100
51	2002	32	58	10	68			100
33	2003	12.1	63.7	24.3	88	78.7	60	100
Low SES	1998							
	1999	18.2	72.7	9.1	81.8			
8	2000	12.5	75	12.5	87.5			100
10	2001 *	30	60	10	70			100
9	2002	22.2	77.8	0	77.8			100
6	2003	16.7	83.4	0	83.4	63.8		100
Not Low SES	1998							
	1999	6.5	64.5	29	93.5			
32	2000	12.5	50	37.5	87.5			100
44	2001 *	40.9	40.9	18.2	59.1			100
42	2002	34.1	53.6	12.2	65.8			100
27	2003	11.1	59.2	29.6	88.8	81.4		100
Female	1998							
	1999	0	72.2	27.8	100			
15	2000	13.3	33.3	53.3	86.6			100
23	2001 *	26.1	65.2	8.7	73.9			100
26	2002	26.9	61.5	11.5	73			100
15	2003	6.7	73.3	20	93.3	82.4		100
Male	1998							
	1999	16.7	62.5	20.8	83.3			
25	2000	12	68	20	88			100
31	2001 *	48.4	29	22.6	51.6			100
25	2002	37.5	54.2	8.3	62.5			100
18	2003	16.7	55.5	27.8	83.3	75.3		100

Science - Grades 6, 8 and 11 percent proficient fall 2000, 2001, 2002, 2003 - all students

Science - Grades 6, 8 and 11 percent proficient fall 2000, 2001, 2002, 2003 - all students

	Grade 6	Grade 8	Grade 11	6, 8 and 11
Fall 2000	76.9	84.8	87.5	83.1
Fall 2001	76.4	73.3	61.1	70.3
Fall 2002	73.7	73.8	68	71.1
Fall 2003	84.7	71.7	88	80.5
2002	28/39	34/46	34/50	96/135
2003	36/42	38/53	29/33	103/128

Culture Climate for Learning - 2003-2004

Long Term Goal: By 2005 80% of North Iowa students will rate at 3 or higher to agree students in our schools treat each other with respect.

Annual Goal: To increase the percent of 2003-2004 North Iowa students responding 3 or higher on Section A of the Building Tomorrow Survey.

North Iowa building attendance for 2003-2004 was: K-4 95%, 5-8 96% and 9-12 96%. Average daily attendance at North Iowa is at the state long term goal.

North Iowa's 2002-2003 graduation rate was 98%. This exceeds the state long term goal.

Building Tomorrow Survey question 6 (Do students in your school treat each other with respect?) increased students responding positively in grades 5, 8 and 11 from 65.3% in 2003 to 65.4% in 2004. The Section A part of the Building Tomorrow Survey shows North Iowa students responding positively 70.4% compared to an AEA 267 average of 54.0%. Section A measures students' attitudes towards each other.

Based on the data on the following pages North Iowa 2004-2005 goals and action plans in culture climate are as follows:

Culture Climate for Learning - 2004-2005

Long Term Goal: North Iowa students will treat each other respectfully.

Annual Goal: The percent of students responding 3 or higher on question 6 of the Building Tomorrow Survey will increase.

Action Plan for Improving Culture Climate for Learning Achievement – 2004-2005

Long Term Goal: North Iowa students will treat each other respectfully.

Annual Goal: The percent of students responding 3 or higher on question 6 of the Building Tomorrow Survey will increase.

Data Source	Activities		Time		Person Responsible	Result
	Strategies	Steps	Begin	End		
	Homeroom/advisor act.		Aug. 04	May 05	Classroom teachers	
	Assemblies and CC activities		Aug. 04	May 05	Building principals	
	Project OWL act.		Aug. 04	May 05	Classroom teachers	
	Citizenship act. Flag Program etc.		Aug. 04	May 05	Building principals	
	Expert speakers assembly/in-service		Aug. 04	May 05	CC Committee	
	Faculty in-service and building level at risk problem solving		Aug. 04	May 05	CC Committee	
	CC Weeks activities		Aug. 04	May 05	CC Committee	

Attendance

	1999-00	2000-01	2001-02	2002-03	2003-04	State K-8 02/03	95.6	
K-4	98	98.3	95.1	93.7	94.8	North Iowa K-8 02/03		94.5
5-8	96	95.8	94.6	95.2	95.8			
9-12	96.2	97.5	95.2	95.1	96.3			

Building Tomorrow Survey

2002/03/04 Do you think students treat other students; politely, fairly, friendly, helpful, kindness or respect?

Building Tomorrow Survey, Section A 02, 03, 04	NI 02	AEA 02	NI 03	AEA 03	NI 04	AEA 04
Grade 5	70.3	62.6	38.3	60.7	67.5	52
Grade 8	71.6	51.1	67.9	59.6	67.9	53.5
Grade 11	71.6	50.8	86.3	62.2	79.2	57
Gr. 5, 8, 11	71.3	55.4	67.1	61	70.4	54

2002/03/04 Do you think adults treat others; politely, fairly, friendly, helpful, kindness or respect?

Building Tomorrow Survey, Section B 02, 03, 04	NI 02	AEA 02	NI 03	AEA 03	NI 04	AEA 04
Grade 5	92	87.5	74.6	89.1	76.8	87.2
Grade 8	84.8	72.7	73.8	75.7	76.6	72.9
Grade 11	73.5	67.2	87.6	76	76.8	69.9

2002/03/04 Do you think students treat other students with respect? Question 6

Building Tomorrow Survey, Question 6 A 02, 03, 04	NI 02	NI 03	NI 04
Grade 5	78.1	44.4	75
Grade 8	70.5	69	57.7
Grade 11	56.8	79.3	64.1
Average 5,8,11	67.5	65.3	65.4

Scale 1-4, percentages = students responding positively (3 or 4)

Graduation Rate

	2001/02	2002/03
North Iowa	97.8	98.3
State of Iowa	89.4	90.4
State Goal	95	95

Additional State Indicators - 2003/04

North Iowa drop-out rate, grades 7-12

	2002/03	2002/03	2003/04	2003/04			
All students	3/298	1	2/292	0.7			
Female Students		1/145	0.7	1/151	0.7		
Male Students	2/153	1.3	1/141	0.7			
White Students	3/287	1	2/279	0.7			
Black Students	0/2	0	0/3	0			
Asian Students	0/3	0	0/4	0			
Hispanic Students		0/5	0	0/5	0		
Am. Indian Students		0/1	1	0/1	0		
St. with Disabilities		1/60	1.7	1/45	2.2		
				2002/03	2002/03	2003/04	2003/04
Percentage of seniors who go on to receive further education or training				52/57	91.2	48/53	90.6
Percentage of high school students who score at a high level on the ACT				21/39	53.8	31/48	64.6
Percentage of 2003 graduates who completed a core program							
Mathmatics				47/57	82.5	34/53	64.2
Percentage of 2003/04 graduates who completed three or more years						34/53	64.2
Science						38/53	71.7
Percentage of 2003/04 graduates who completed three or more years							
Social Studies						53/53	1
Percentage of 2003/04 graduates who completed three or more years							
English/Language Arts						53/53	4

Early Intervention - 2003-2004

Long Term Goal: All K-12 students will achieve at high levels in reading comprehension, prepared for success beyond high school.

Annual Goal: To increase percent of students in grades 3-8 and 10 scoring at or above grade level on the vocabulary subtest of the Gates MacGinitie Reading Assessment.

See page _____ for progress on Early Intervention.

	ITBS/ITED	Gates	Cr. Read.	Math Comp.	Math Ex.	Sci. Ex.	Dibles
Grade K		S	S/F		S/F		S/W/F
Grade 1		S	S/F		S/F		S/W/F
Grade 2		S	S/F	S/F	S/F		S/W/F
Grade 3	F	S	S/F	S/F	S/F		S/W/F
Grade 4	F	S	S/F	S/F	S/F		S/W/F
Grade 5	F	S	S/F	S/F	S/F	S/F	
Grade 6	F	S	S/F	S/F	S/F	S/F	
Grade 7	F	S	S/F	S/F	S/F	S/F	
Grade 8	F	S	S/F	S/F	S/F	S/F	
Grade 9							
Grade 10		S	S/F	S/F (algebra)		S/F	S/F
Grade 11	F		S/F				ACT
Grade 12							

Date	Time	Place	Activity
(Th) Aug. 17	8:00-4:00	T	New Teacher Induction/Mentoring
(W) Aug. 18	8:00-4:00	T	New Teacher Induction/Mentoring
(F) Aug. 20	8:00-2:00 5:50-7:30	BC T	Mandatory Meetings Staff Picnic
(M) Aug. 23	8:00-4:00	BC	A.M. Curriculum Committees, P.M. Blg. Level
(W) Oct. 6	7:00-4:00	MC	NIC Inservice
(M) Oct. 11 Fair	1:45-4:00	BC	Districtwide Assess. - Reliability - Parent
(F) Dec. 3	1:45-4:00	T	Sp. Ed. Workshop
(W) Dec. 22	8:00-4:00	BC	A.M. Reading Strategies, P.M. Blg.. Level
(M) Jan. 3	8:00-4:00	T	A.M. Math/Reading Strategies, P.M. Blg. Level
(F) Jan. 14	1:45-4:00		End of Semester
(W) Mar. 2	1:45-4:00	BC	Sp. Ed./TAG Workshop
(W) Apr. 27	1:45-4:00	BC	Districtwide Assessments - Reliability
(W) May 4	8:00-4:00	T	A.M. Curriculum, P.M. Blg. Level
(F) May 27	8:00-4:00	BC	Math/Science/Technology Workshop
(M) May 31	8:00-4:00	T	A.M. Curriculum, P.M. Blg. Level

North Iowa Community Schools

*

Buffalo Center, Rake, Lakota, Thompson
2003-2004 Community Report

North Iowa Community Schools Math Standards - 2003-2004

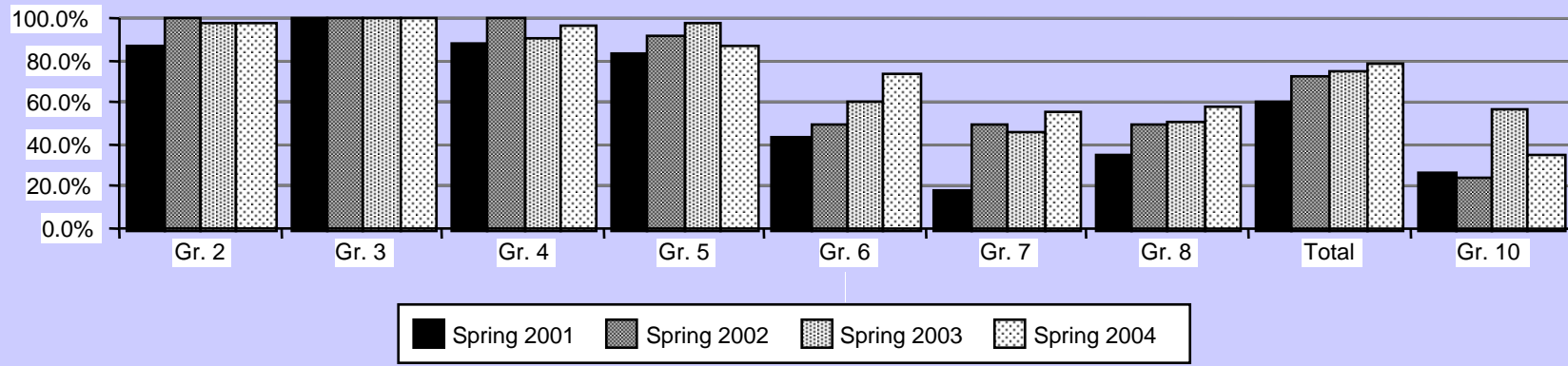
1. Uses a variety of strategies in the problem-solving process.
2. Understands and applies concepts of numbers.
3. Makes reasonable estimates and computes accurately.
4. Understands and applies concepts of measurement.
5. Understands and applies concepts of geometry.
6. Understands and applies concepts of statistics data analysis and probability.
7. Understands and applies algebra.

Long Term Goal: By 2005 80% of North Iowa students will be able to complete math computations at the proficient level as measured on the District Computation test grades 2-8.

Annual Goal: The percent of 2003-2004 North Iowa students in grades 2-8 scoring at the proficient level (70%+) on the District Computation Test will increase using two year averaging.

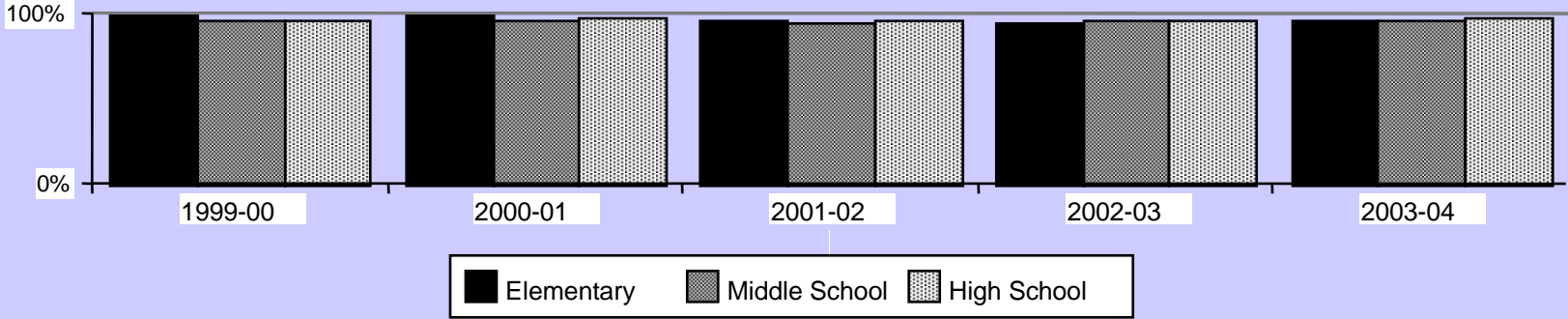
*

NICS District Math Computation 2001-2004 - Percent Proficient

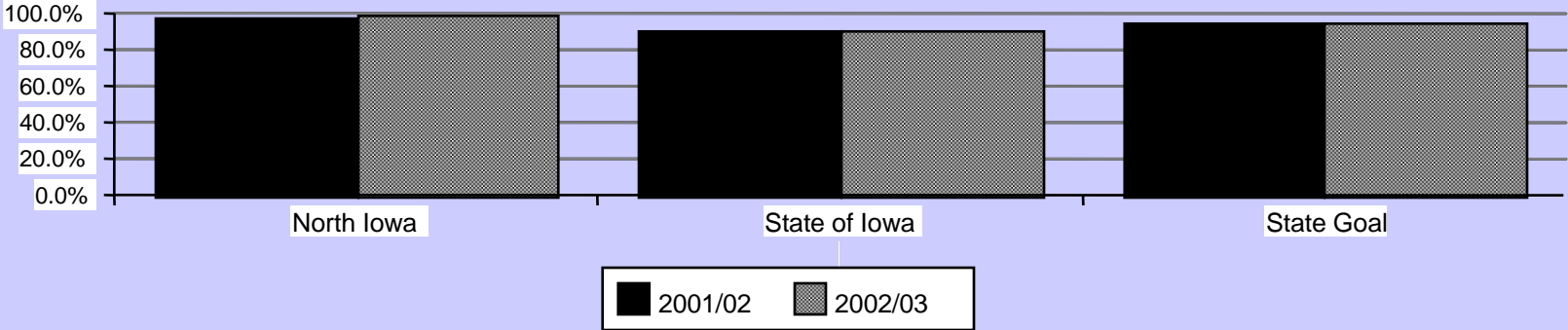


Average Daily Attendance 1999-2004 and Graduation Rate

NICS Average Daily Attendance 1999-2004



NICS Graduation Rate



Caring communities link students with success

Student led Conferences
Guest Speakers
Field Trips
Newspaper Articles
Radio Announcements
Project Owl
Winnebago Conservation Commission
Coffee on the Superintendent
Food Pantry

Volunteers
Jump Rope for Heart
Hoops for Heart
Blood Drives
Benefit Suppers
Nursing Home Visits
Half-time Shows
Job Shadowing
Little Bison Relays
School Board Meetings

Coffee on the Superintendent offers a more casual setting between the District and its patrons when discussing school issues. This is an alternate route to monthly board meetings.

The Ministerial Association involves local pastors and educators to develop joint activities for the youth of North Iowa in addition to assisting special needs that arise.

North Iowa students achieve more because of their caring communities.....

Ministerial Association

DARE

Vision 2000

Early Childhood Meetings

Transition Days

Home page Announcements

SADD

Bison Charities

Athletic Boosters

Music Boosters

Lions Club

Alumni Scholarship Fund

Technology Committee

Senior Athlete of the Week

Book Fairs

Busy Bee Graduation

Earth Day

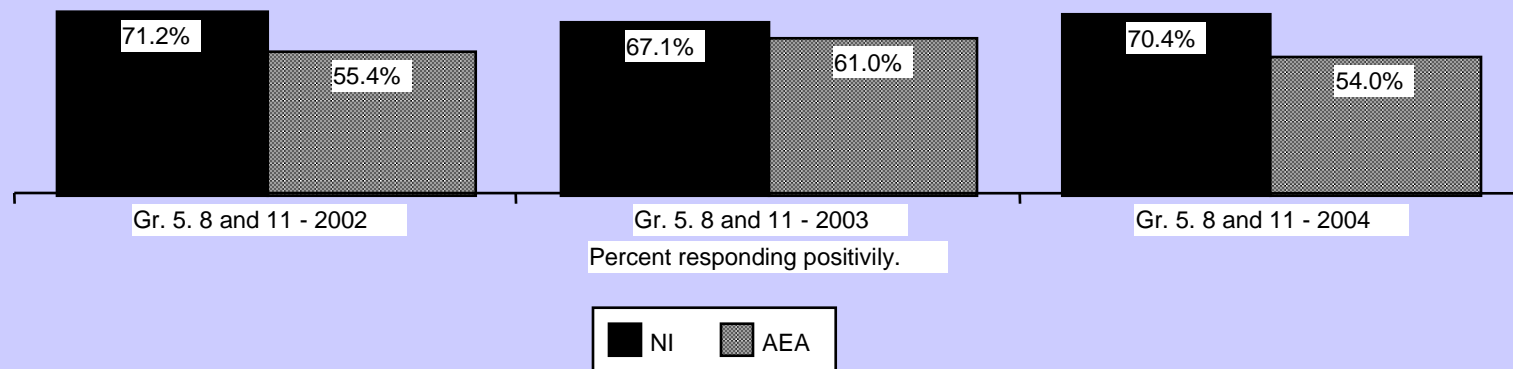
Culture Climate for Learning - 2003-2004

Long Term Goal: By 2005 80% of North Iowa students will rate at 3 or higher to agree students in our schools treat each other with respect.

Annual Goal: To increase the percent of 2003-2004 North Iowa students responding 3 or higher on Section A of the Building Tomorrow Survey.

Do you think students treat other students; politely, fairly, friendly, helpful, kindness or respect?

Building Tomorrow Survey, Section A 02, 03, 04 - Grades 5, 8 and 11



North Iowa Community Schools - Faculty and Administration 2003-2004

		<u>Assignment at NICS</u>				<u>Assignment at NICS</u>	
Hansen	Rod	M.S./H.S. Ind. Arts/S.S.	33		Aukes	Deb	Nurse/Health 16
Thomsen	Barb	M.S. S.S./L.A.	31	Hobbs	Dee	Elem. Reading	16
Kakacek	Dave	Elem./H.S. Vocal Music	30.5		Jutting	Janet	Elem. Sp. Ed. 16
Hagedorn	Louise	Elem. Grade 4	30	Nepstad	Renae	Elem. grade 2	15
Brooks	Connie	Elem. Grade 4	29	Coy	Diane	M.S. Cultural Arts	14
Matthias	Diane	M.S. Science	29	Sime	Nancy	M.S. Math	14
Gerzema	Dean	H.S. Ag. Science/Ag. Business	28		Adams	Thelma	M.S. Sp. Ed. 11
Jacobsen	Diane	Elem. Grade 2	28	Ewest	Brad	M.S. S.S./Sp. Ed./ A.D.	11
Smith	Tom	H.S. S.S./P.E.	27	Holland	Gloria	Elem. Sp. Ed.	11
Swenson	Dean	Elem/H.S. Speech/Art	26		Blodgett	Brian	H.S. Science/Technology
	9						
Will	EJ	Alternitive School	26	Kettwick	Carole	M.S./H.S.Vocal Music/Business	8.5
Andersen	Marlys	M.S. Math/L.A.	23	Blodgett	Christina	Elem. Reading	8
Anderson	Leon	M.S. Science/L.A.	23	Leerar	Marlene	Elem. Grade 1	8
Friesenborg	Linda	H.S. Con. Science	23		Twait	Alan	Elem. Grade K 8
Huntington	Brad	Elem./H.S. Guidance	23		Cook	Jeff	M.S./H.S. Instrumental
	6						
Hill	Larry	Elem. Principal/Superintendent	22		Evans	Michael	M.S. Principal 4
Keil	Susan	Elem. Grade 3	20	Giesking	Mary	Elem. Reading	4
Peake	Sue	K-12 Gifted and Talented	20		Potter	Jon	H.S. Social Studies
	4						
Sime	Sue	Elem. Grade K	20	Anderson	Arin	Elem. Reading	3
Tweed	Jeannine	M.S./H.S. Business/Technology	20		Hooper	Anthony	H.S. Science 3
DeBoer	Doug	H.S. Math	19	Hinders	Chad	M.S. Guidance/P.E.	3
DeBoer	JoAnn	H.S. L.A.	19	Stevens	Juanita	M.S. P.E.	3
Huntington	Loree	Elem. Grade 1	19	Webb	Merrie Lyn	Elem. Grade 2	3
Leerar	Marilyn	M.S./H.S. Sp. Ed./Health	19		Geitznauer	Brenda	H.S. Science 1
Lockrem	Connie	Elem. Early Childhood	19		Kettwick	Robin	H.S. Sp. Ed. 0
Bidne	Joan	M.S. Reading/L.A.	18		Diercks	Dan	H.S. Principal 0
Brandenburg	Kris	H.S. L.A./Sp. Ed.	18	Kopperud	Judd	M.S. Language Arts	0

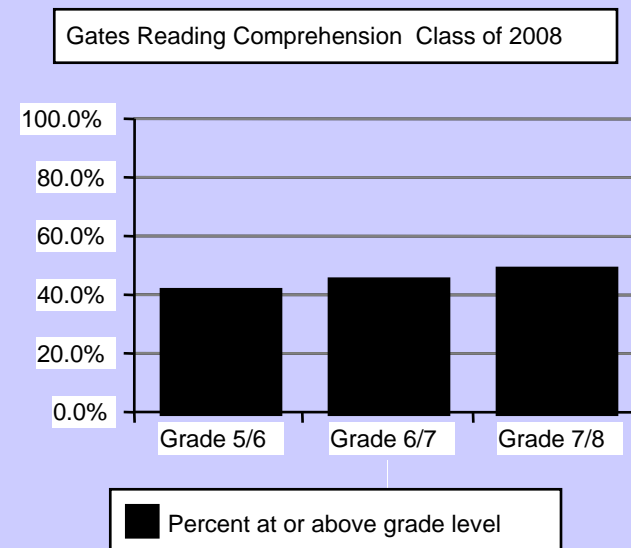
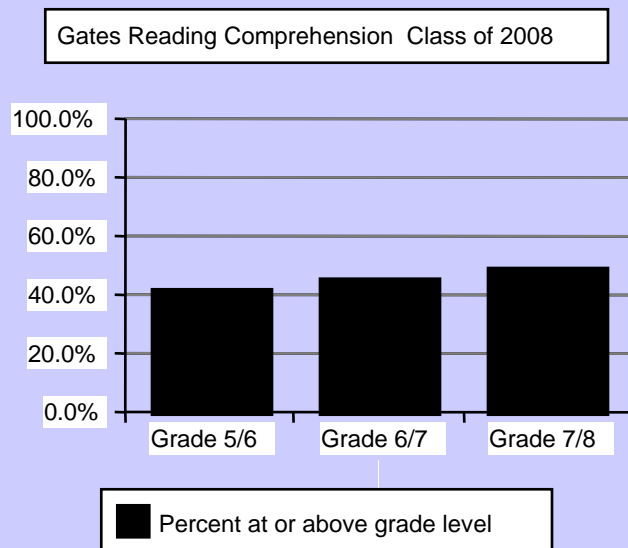
North Iowa Community Schools Language Arts Standards

1. Demonstrates competence in the general skills and strategies of the writing process.
2. Demonstrates competence in the stylistic and rhetorical aspects of writing.
3. Uses grammatical and mechanical conventions in written compositions.
4. Effectively gathers and uses information for research purposes.
5. Demonstrates competence in the general skills and strategies of the reading process.
6. Demonstrates competence in the general skills and strategies for a variety of literary and informational text.
7. Demonstrates competence in speaking and listening as tools for learning.

Reading - 2003-2004

Long Term Goal: By 2005 80% of North Iowa students (in grades 4, 6, 8 and 11) will read at or above the proficient level as measured on ITBS and ITED.

Annual Goal: The percent of 2003-2004 NICS 8th grade students reading at or above grade level will increase as measured on the Spring Gates MacGinitie Reading Comprehension Assessment using two year averaging.



Design Team and District Advisory Committee

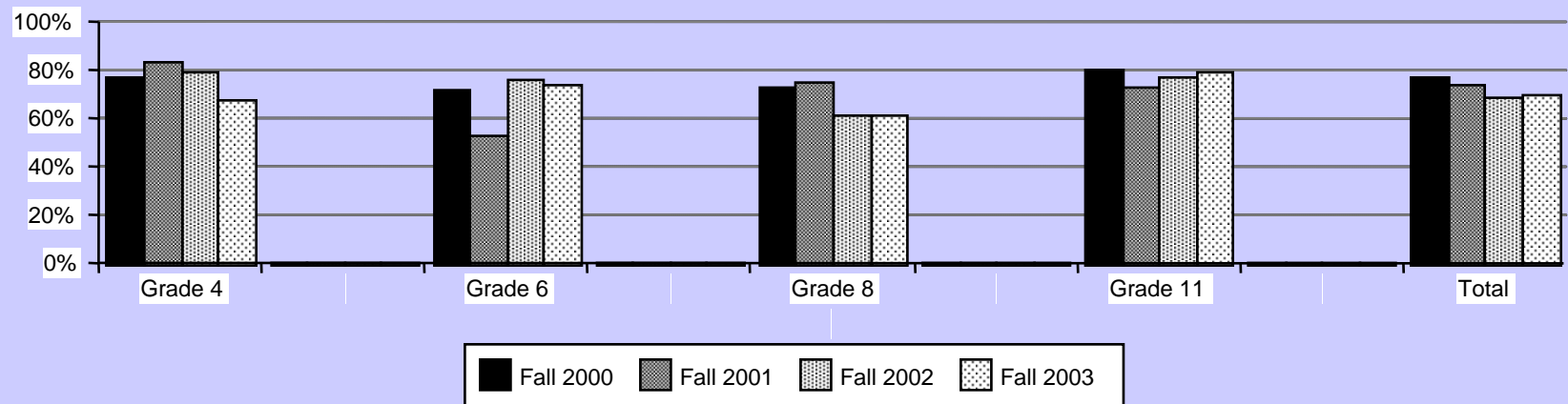
The North Iowa Design Team meets on a regular basis to develop district goals, plan in services and analyze progress.

The North Iowa District Advisory Committee meets biannually to analyze student achievement data and make recommendations to the Board of Directors.

North Iowa Elementary School, Buffalo Center, Iowa

North Iowa High School, Buffalo Center, Iowa

ITBS/ITED Reading Comprehension



North Iowa Middle School, Thompson, Iowa

We're proud of our school

North Iowa Community School's Essential Learnings and Indicators of Success (Student Learning Goals)

North Iowa students will be successful communicators. Successful communicators:
express needs and ideas so others understand
interprets experiences
evaluates and analyzes information
listens and perceives information from others

North Iowa students will use good problem solving skills. Successful problem solvers:
apply skills to real life situations
learn from past experiences
use a variety of appropriate technology
demonstrates appropriate risk taking
shows conflict management skills

North Iowa students will be life-long learners. Life-long learners:
demonstrate self-sufficiency/self-directed learning
demonstrate appropriate use of resources
demonstrate adaptability to various situations
demonstrate perseverance

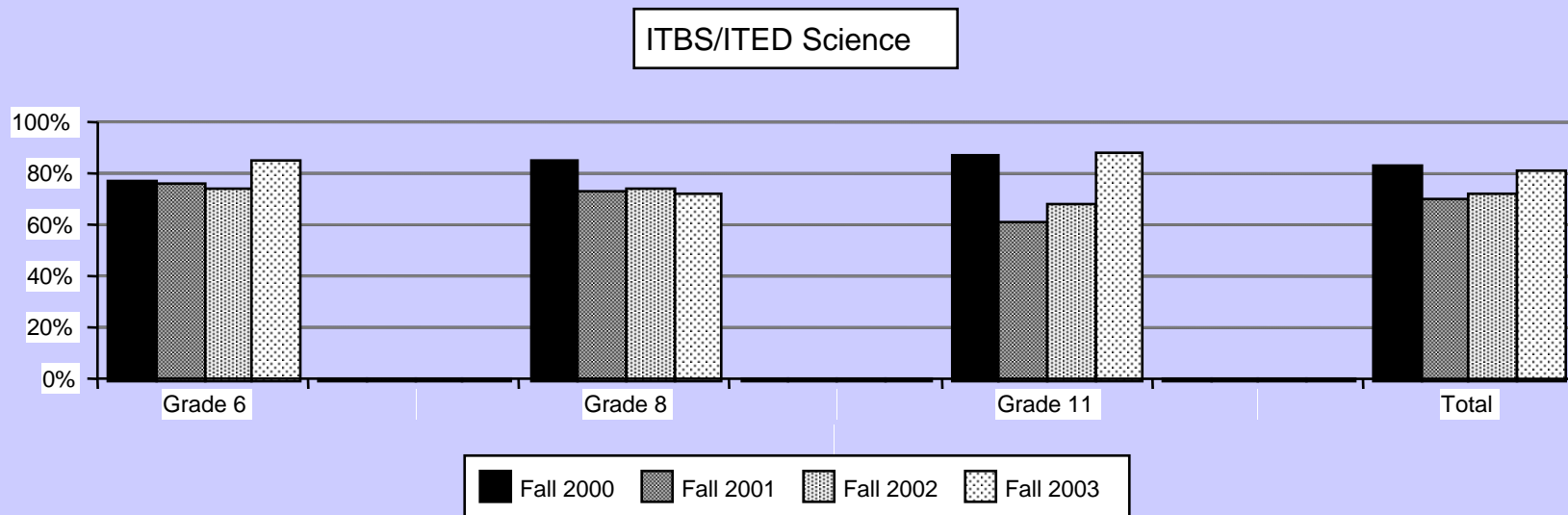
North Iowa students will practice good citizenship. Good citizens:
demonstrate responsibility and active participation in the democratic society
demonstrate effective use of social skills
shows responsibility for themselves, to others and to the world

North Iowa Community Schools Science Standards

1. Understands features of the earth, its processes, and its place in the universe.
2. Understands the structures, processes and interactions that are characteristic of living things.
3. Understands the basic concepts and properties of energy and matter.
4. Understands the nature of scientific knowledge and inquiry.

Long Term Goal: By 2005 75% of North Iowa students will score at the proficient level or higher on ITBS and ITED composite science score.

Annual Goal: The percent of 2003-2004 North Iowa students in grades 6, 8 and 11 that score at the intermediate level or higher will increase (ITBS and ITED) or the percent of students scoring at the proficient level (3 or higher) will increase from fall to spring on the district science assessment grades 5-8 and 10



NORTH IOWA COMMUNITY SCHOOL DISTRICT

COMPREHENSIVE SCHOOL IMPROVEMENT GOALS 2004-2005

Reading - 2004-2005

Long Term Goal: All K-12 students will achieve at high levels in reading comprehension, prepared for success beyond high school.

Annual Goal: To increase percent of students in grades 3-8 and 10 scoring at or above grade level on the vocabulary subtest of the Gates MacGinitie Reading Assessment.

Math - 2004-2005

Long Term Goal: All K-12 students will achieve at high levels in mathematics, prepared for success beyond high school.

Annual Goal: The percent of students scoring proficient (70%) on the district Computation Test (grades 2-8) and the district Algebra Test (grade 10) will increase using two-year averaging.

Science - 2004-2005

Long Term Goal: All K-12 students will achieve at high levels in science, prepared for success beyond high school.

Annual Goal: The percent of students in grades 6, 8 and 11 that score at the intermediate level or higher will increase (ITBS, ITED) or the percent of students scoring proficient (3 or higher) will increase from fall to spring on the district science assessment (grades 5-8 and 10).

Culture Climate for Learning - 2004-2005

Long Term Goal: North Iowa students will treat each other respectfully.

Annual Goal: The percent of students responding 3 or higher on question 6 of the Building Tomorrow Survey will increase.