

Remote Desktop Connection found on your home computer

Go to your Start button

All Programs

Accessories (you MIGHT find Remote Desktop Connection here)

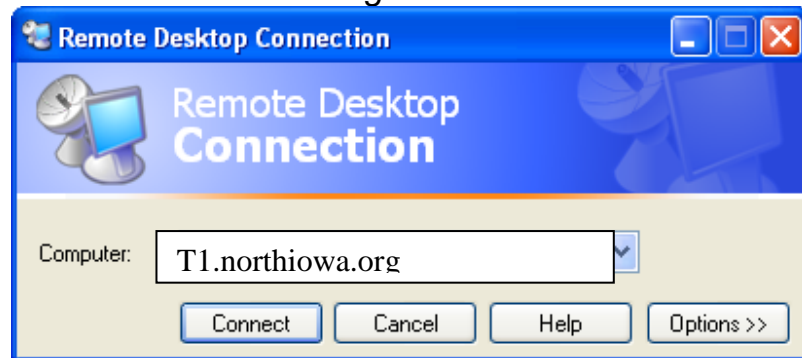
OR go to Communications

Remote Desktop Connection

(You could also type in Remote Desktop Connection in the “Search Programs and Files” just above your Start button)

When it asks for a computer, type in:

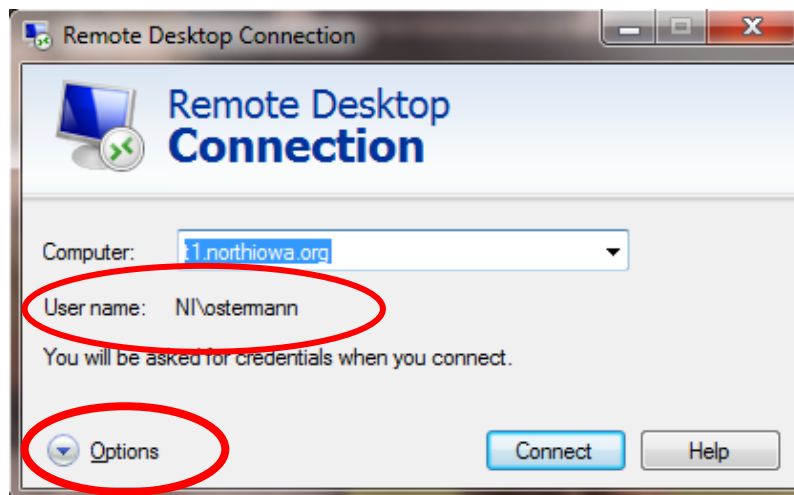
- *T1.northiowa.org*



- It will ask for username and a password
- **You may need to verify the USERNAME:**
NI_____

Click on OPTIONS, and verify that the username is NI_____ (whatever your username is)

- Type in password



- You will then be in the Terminal Server
- Logoff when done to return your screen